

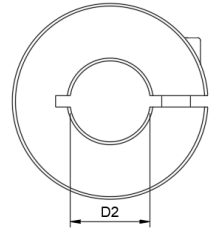
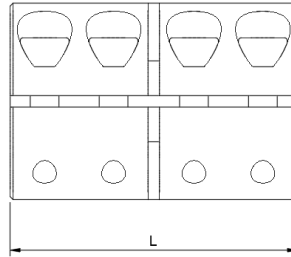
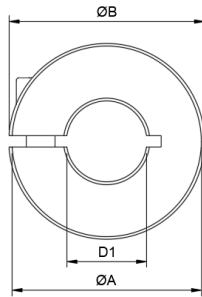
ABSSAC Rigid Shaft Couplings



ABSSAC
PRECISION MOTION SINCE 1982

1 Piece Rigid Shaft Coupling

RIGID KBST



Standard Part Numbers

RIGID KBST - 50

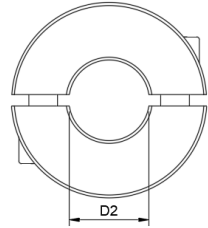
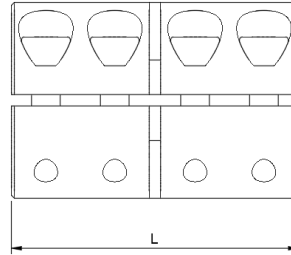
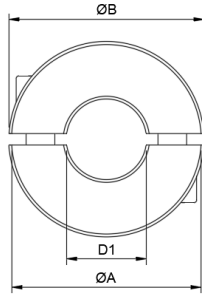
Different Bores Part Numbers

RIGID KBST - 50 - 45 - 48

Size	Torque (Nm)	Dimensions					Clamping Bolt (ISO4762)	Clamping Torque (Nm)	Weight (g)
		Standard Bore D1/D2 H7	Different Bore From - To	A (mm)	B (mm)	L (mm)			
6	30	6	5-7	18	21.2	30	M3x8	2	47
8	50	8	5-12	24	26.8	35	M3x10	3	102
10	100	10	5-15	29	32.7	45	M4x12	4.5	185
12	100	12	5-15	29	32.7	45	M4x12	4.5	180
14	190	14	10-17	34	39.1	50	M5x16	9	272
15	190	15	10-17	34	39.1	50	M5x16	9	266
16	190	16	10-17	34	39.1	50	M5x16	9	261
20	350	20	10-24	42	48.2	65	M6x16	15	518
25	390	25	10-26	45	50.8	75	M6x16	15	623
30	475	30	20-32	53	58.1	83	M6x18	15	920
35	1100	35	20-40	67	74.1	95	M8x25	40	1880
40	1325	40	30-50	77	83.4	108	M8x25	40	2710
50	2250	50	40-52	85	93.2	124	M10x25	84	3520

2 Piece Rigid Shaft Coupling

RIGID KBST-G



Standard Part Numbers

RIGID KBST - G - 50

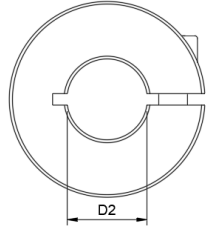
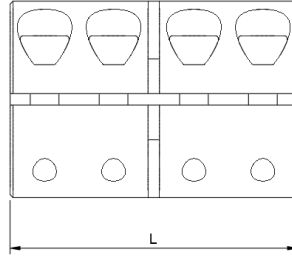
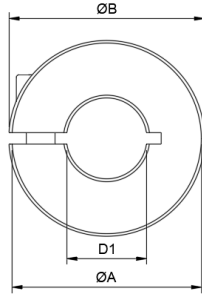
Different Bores Part Numbers

RIGID KBST - G - 50 - 45 - 48

Size	Torque (Nm)	Dimensions					Clamping Bolt (ISO4762)	Clamping Torque (Nm)	Weight (g)
		Standard Bore D1/D2 H7	Different Bore From - To	A (mm)	B (mm)	L (mm)			
6	30	6	5-7	18	21.2	30	M3x8	2	47
8	50	8	5-12	24	26.8	35	M3x10	3	102
10	100	10	5-15	29	32.7	45	M4x12	4.5	185
12	100	12	5-15	29	32.7	45	M4x12	4.5	180
14	190	14	10-17	34	39.1	50	M5x16	9	272
15	190	15	10-17	34	39.1	50	M5x16	9	266
16	190	16	10-17	34	39.1	50	M5x16	9	261
20	350	20	10-24	42	48.2	65	M6x16	15	518
25	390	25	10-26	45	50.8	75	M6x16	15	623
30	475	30	20-32	53	58.1	83	M6x18	15	920
35	1100	35	20-40	67	74.1	95	M8x25	40	1880
40	1325	40	30-50	77	83.4	108	M8x25	40	2710
50	2250	50	40-52	85	93.2	124	M10x25	84	3520

1 Piece Rigid Shaft Coupling Stainless

RIGID KBST-VA



Standard Part Numbers

RIGID KBST - VA - 50

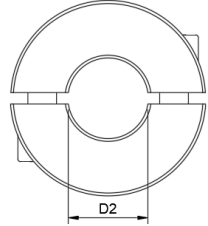
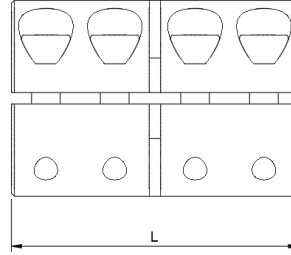
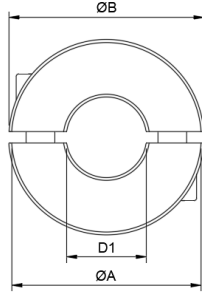
Different Bores Part Numbers

RIGID KBST- VA - 50 - 45 - 48

Size	Torque (Nm)	Dimensions					Clamping Bolt (ISO4762)	Clamping Torque (Nm)	Weight (g)
		Standard Bore D1/D2 H7	Different Bore From - To	A (mm)	B (mm)	L (mm)			
6	25	6	5-7	18	21.2	30	M3x8	1.6	47
8	40	8	5-12	24	26.8	35	M3x10	1.6	102
10	90	10	5-15	29	32.7	45	M4x12	3.9	185
12	90	12	5-15	29	32.7	45	M4x12	3.9	180
14	160	14	10-17	34	39.1	50	M5x16	7.6	272
15	160	15	10-17	34	39.1	50	M5x16	7.6	266
16	160	16	10-17	34	39.1	50	M5x16	7.6	261
20	300	20	10-24	42	48.2	65	M6x16	13.2	518
25	325	25	10-26	45	50.8	75	M6x16	13.2	623
30	400	30	20-32	53	58.1	83	M6x18	13.2	920
35	925	35	20-40	67	74.1	95	M8x25	32	1880
40	1100	40	30-50	77	83.4	108	M8x25	32	2710
50	1875	50	40-52	85	93.2	124	M10x25	63	3520

2 Piece Rigid Shaft Coupling Stainless

RIGID KBST-G-VA



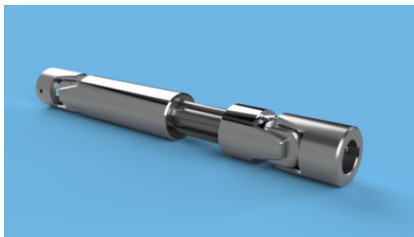
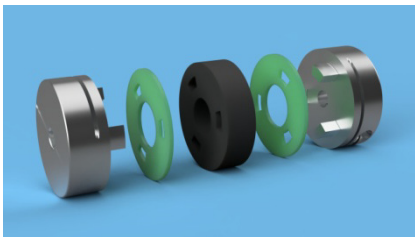
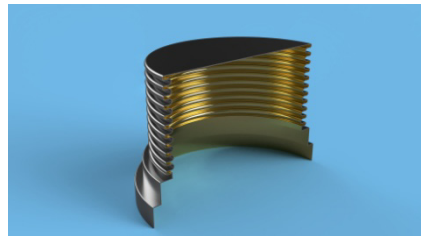
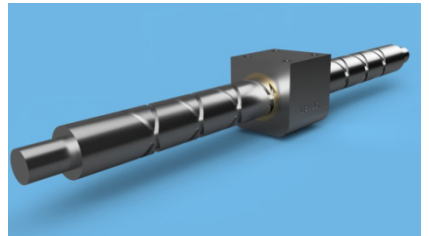
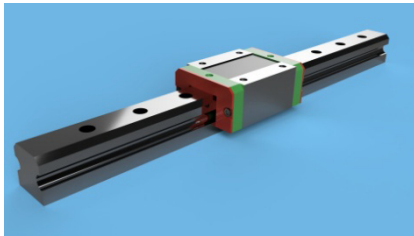
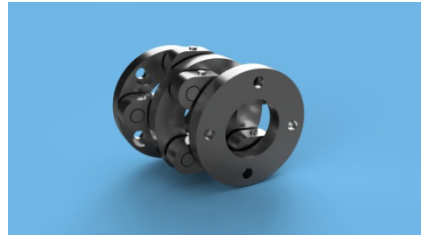
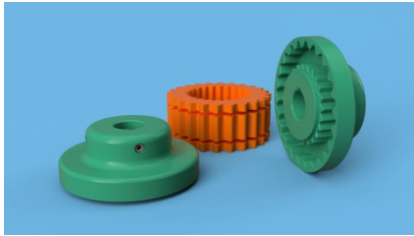
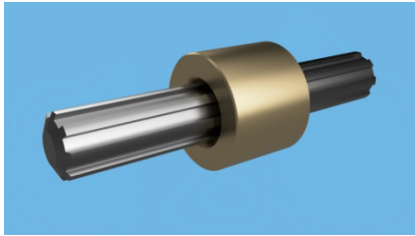
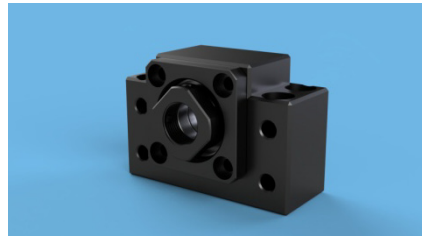
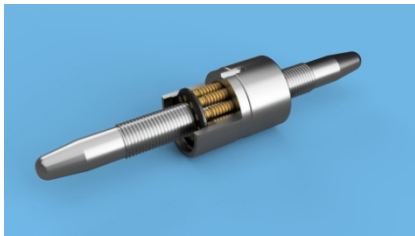
Standard Part Numbers

RIGID KBST - G - VA - 50

Different Bores Part Numbers

RIGID KBST - G - VA - 50 - 45 - 48

Size	Torque (Nm)	Dimensions					Clamping Bolt (ISO4762)	Clamping Torque (Nm)	Weight (g)
		Standard Bore D1/D2 H7	Different Bore From - To	A (mm)	B (mm)	L (mm)			
6	25	6	5-7	18	21.2	30	M3x8	1.6	47
8	40	8	5-12	24	26.8	35	M3x10	1.6	102
10	90	10	5-15	29	32.7	45	M4x12	3.9	185
12	90	12	5-15	29	32.7	45	M4x12	3.9	180
14	160	14	10-17	34	39.1	50	M5x16	7.6	272
15	160	15	10-17	34	39.1	50	M5x16	7.6	266
16	160	16	10-17	34	39.1	50	M5x16	7.6	261
20	300	20	10-24	42	48.2	65	M6x16	13.2	518
25	325	25	10-26	45	50.8	75	M6x16	13.2	623
30	400	30	20-32	53	58.1	83	M6x18	13.2	920
35	925	35	20-40	67	74.1	95	M8x25	32	1880
40	1100	40	30-50	77	83.4	108	M8x25	32	2710
50	1875	50	40-52	85	93.2	124	M10x25	63	3520



ABSSAC Ltd, E1A The Enterprise Centre, Enterprise Way
Evesham, Worcestershire. United Kingdom. WR11 1GS

Call: 01386 421 005

Email: sales@abssac.co.uk

Visit: www.abssac.co.uk



twitter.com/ABSSAC



uk.pinterest.com/abssac



instagram.com/abssac

ABSSAC
PRECISION MOTION SINCE 1982