

Schmidt Offset Shaft Couplings



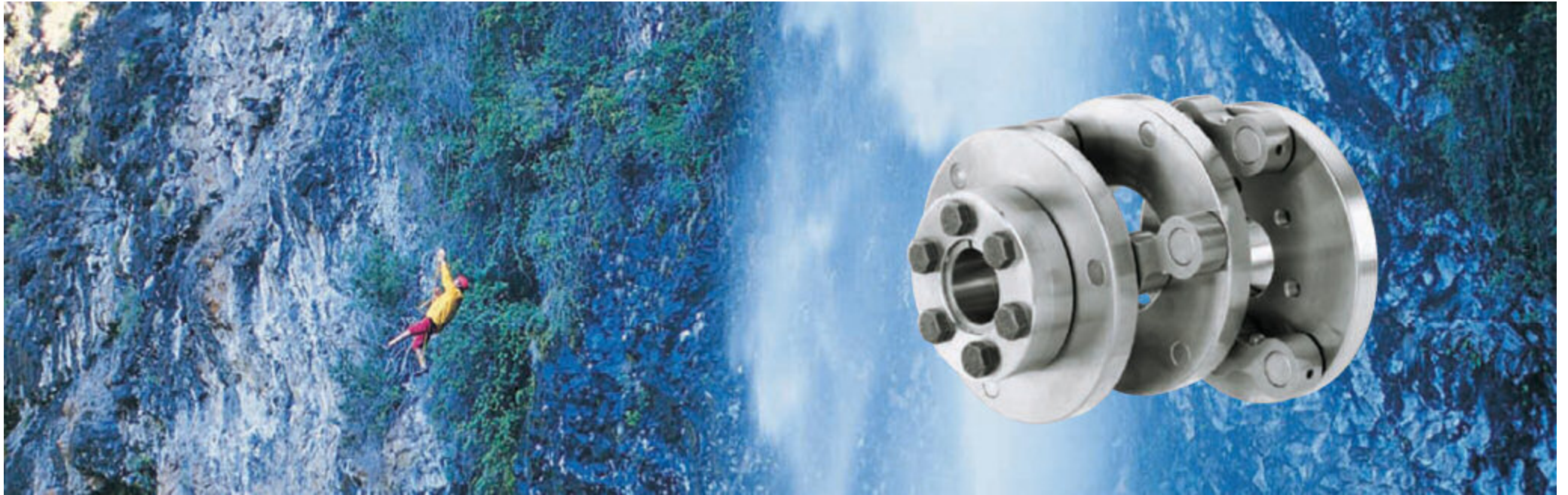
ABSSAC

PRECISION MOTION SINCE 1982



Schmidt-Kupplung® ► Standard

Symbiosis of performance, compact design and generous offset capacity



The Schmidt-Kupplung® series



Standard S series

Symbiosis of performance, compact design and generous offset capacity Bore diameter up to 80 mm Torque (T_{KN}) 44 Nm to 2.875 Nm



Power Plus P series

More torque transmission while retaining compact design Bore diameter up to 95 mm Torque (T_{KN}) 44 Nm to 6.610 Nm



Offset Plus V series

Extreme parallel shaft offset while retaining compact design Bore diameter up to 80 mm Torque (T_{KN}) 44 Nm to 3.830 Nm

Schmidt-Kupplung®

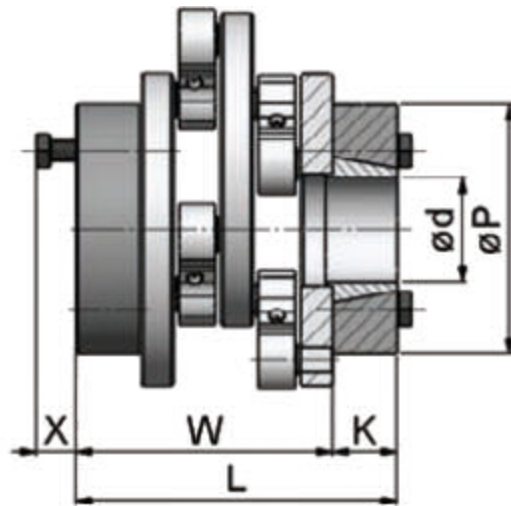
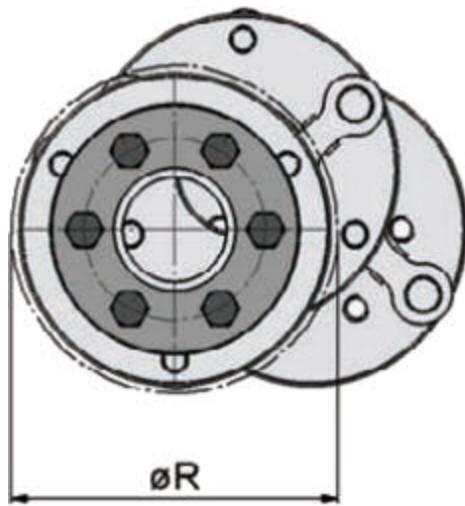
Our classic for extreme parallel offset: The Schmidt-Kupplung® compensates variable parallel shaft offset without side loads in a very compact envelope. The Schmidt-Kupplung® is the ideal precision component for small envelopes and a better alternative to long cardan shafts.

Standard Serie S

A symbiosis of performance, compact design and generous misalignment capacity.

Schmidt-Kupplung® ► Standard

Symbiosis of performance, compact design and generous offset capacity



Hub version 3: locking-assembly

	T_{KN} (Nm)	$T_{K \max}$ (Nm)	n_{\max} (1/min)	ΔK_V (mm)	$\Delta K_{r \min}$ (mm)	$\Delta K_{r \max}$ (mm)	ΔK_a (mm)	ΔK_w (°)	C_T (kNm/rad)	J (kg cm ²)	m (kg)	$\varnothing R$ (mm)	L (mm)	X (mm)	W (mm)	K (mm)	$\varnothing P$ (mm)	standard bore diameters (mm)
S 35	35	65	3.100	45	6	23	1	0,8	7	2,1	0,7	52	74	9	44	15	41	15, 16
S 40	45	85	1.900	95	13	50	1	0,8	10	4,1	1	62	74	9	44	15	47	19, 20
S 45	45	85	2.800	45	6	23	1	0,8	10	4	0,9	62	74	9	44	15	47	19, 20
S 115	110	210	3.500	64	9	34	1	0,8	24	13	2,2	74	108	14	74	17	60	16, 18, 20
S 150	150	290	2.200	126	17	66	1	0,8	33	29,1	2,9	94	116	15	74	21	76	25, 28, 30
S 155	150	290	3.100	64	9	34	1	0,8	33	34,8	3,3	94	116	15	74	21	76	25, 28, 30
S 210	210	410	1.900	126	17	66	1	0,8	47	105,5	5,9	124	124	17	74	25	96	30, 32, 35, 40
S 215	210	410	2.700	64	9	34	1	0,8	47	102,6	5,8	124	124	17	74	25	96	30, 32, 35, 40
S 285	280	550	2.500	100	14	53	1	0,5	63	84	6,2	100	151	17	101	25	96	30, 32, 35, 40
S 360	360	710	1.800	162	22	85	1	0,5	81	141	7,7	120	151	17	101	25	96	30, 32, 35, 40
S 365	360	710	2.300	100	14	53	1	0,5	81	135	7,4	120	151	17	101	25	96	30, 32, 35, 40
S 440	440	865	1.700	162	22	85	1	0,5	99	225	9,4	140	151	17	101	25	96	30, 32, 35, 40
S 445	440	0.865	2.100	100	14	53	1	0,5	99	216	9,1	140	151	17	101	25	96	30, 32, 35, 40
S 630	630	1.240	1.500	162	22	85	1	0,5	142	370	14,5	143	194	23	134	30	112	45, 50
S 635	630	1.240	1.700	122	17	64	1	0,5	142	365	14,5	143	194	23	134	30	112	45, 50
S 760	760	1.485	1.400	162	22	85	1	0,5	170	495	16	163	184	17	134	25	96	30, 32, 35, 40
S 765	760	1.485	1.600	122	17	64	1	0,5	170	535	17	163	184	17	134	25	96	30, 32, 35, 40
S 950	950	1.820	1.300	162	22	85	1	0,5	209	1.020	22,5	190	202	24	134	34	120	50, 55, 60
S 955	950	1.820	1.500	122	17	64	1	0,5	209	1.010	22,5	190	202	24	134	34	120	50, 55, 60
S 1130	1.130	2.200	1.200	180	25	95	1	0,5	252	620	19,5	164	209	20	155	30	115	30, 35, 40
S 1135	1.130	2.200	1.500	129	18	68	1	0,5	252	590	19	164	209	20	155	30	115	30, 35, 40
S 1320	1.320	2.580	1.200	180	25	95	1	0,5	296	1.040	25	184	223	24	155	34	120	50, 55, 60

Schmidt-Kupplung® ► Standard

Symbiosis of performance, compact design and generous offset capacity

Hub version 3: locking-assembly

	T _{KN} (Nm)	T _{K max} (Nm)	n _{max} (1/min)	ΔK _v (mm)	ΔK _{r min} (mm)	ΔK _r (mm)	ΔK _a (mm)	ΔK _w (°)	C _T (kNm/rad)	J (kg cm ²)	m (kg)	ØR (mm)	L (mm)	X (mm)	W (mm)	K (mm)	ØP (mm)	standard bore diameters (mm)
S 1325	1.320	2.580	1.400	129	18	68	1	0,5	296	1.010	24,5	184	223	24	155	34	120	50, 55, 60
S 1520	1.520	2.965	1.100	180	25	95	1	0,5	340	1.490	29	204	235	30	155	40	155	60, 65, 70
S 1525	1.520	2.965	1.300	129	18	68	1	0,5	340	1.630	32	204	235	30	155	40	155	60, 65, 70
S 2160	2.160	4.220	1.000	219	30	115	2	0,3	484	1.825	35	200	264	24	196	34	120	50, 55, 60
S 2165	2.160	4.220	1.200	162	22	85	2	0,3	484	1.725	34	200	264	24	196	34	120	50, 55, 60
S 2870	2.875	5.625	0.900	219	30	115	2	0,3	645	4.400	55	250	284	31	196	44	170	70, 75, 80
S 2875	2.875	5.625	1.000	162	22	85	2	0,3	645	4.250	54	250	284	31	196	44	170	70, 75, 80

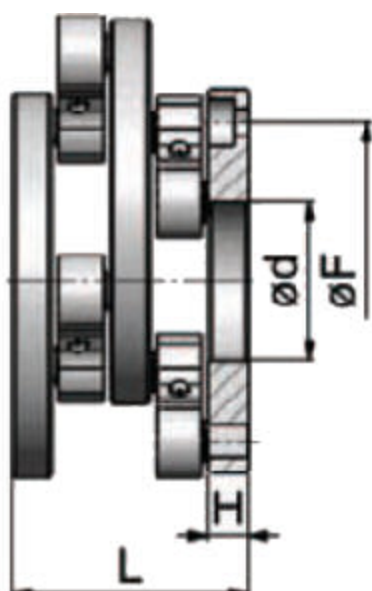
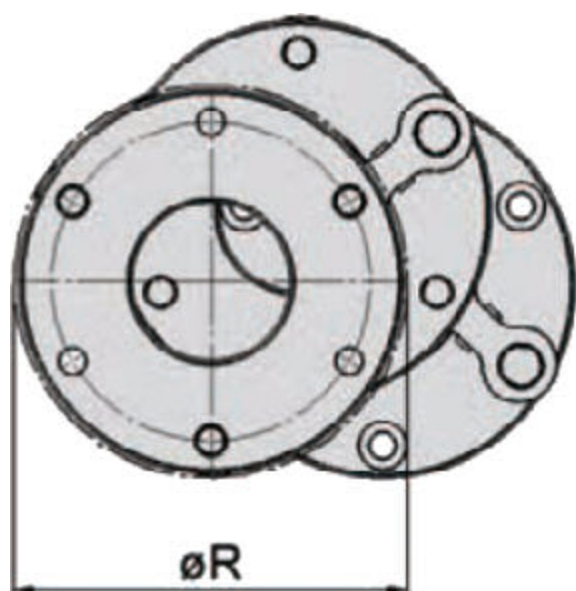
Order Example 1: S 210.33 Ø30 Ø40 Order Example 2: S 445.33 Ø32 Ø40

S 445	33	Ø32 Ø40
Type Schmidt-Kupplung® Standard S 445	both sides locking-assembly	bore diameters

To ensure the correct selection of the Schmidt-Kupplung® please use the TD Calculator of the column Schmidt-Kupplung® or please use our selection procedure and legend area to download the required information.

Schmidt-Kupplung® ► Standard

Symbiosis of performance, compact design and generous offset capacity



Hub version 5: flange-mounting

	T _{KN} (Nm)	T _{K max} (Nm)	n _{max} (1/min)	ΔK _v (mm)	ΔK _{r min} (mm)	ΔK _r (mm)	ΔK _a (mm)	ΔK _w (°)	C _T (kNm/rad)	J (kg cm ²)	m (kg)	ØR (mm)	H (mm)	L (mm)	Ød (mm)	ØF (mm)	Skg
S 35	35	65	3.100	45	6	23	1	0,8	7	1,5	0,4	52	8	44	22	35	3xM6
S 40	45	85	1.900	95	13	50	1	0,8	10	3,1	0,6	62	8	44	25	45	3xM6
S 45	45	85	2.800	45	6	23	1	0,8	10	2,8	0,5	62	8	44	25	45	3xM6
S 115	110	210	3.500	64	9	34	1	0,8	24	7,5	1,1	74	12,5	74	25	48	3xM8
S 150	150	290	2.200	126	17	66	1	0,8	33	24	1,9	94	12,5	74	45	70	3xM8
S 155	150	290	3.100	64	9	34	1	0,8	33	21,5	1,7	94	12,5	74	45	70	3xM8
S 210	210	410	1.900	126	17	66	1	0,8	47	61	2,9	124	12,5	74	50	100	5xM8
S 215	210	410	2.700	64	9	34	1	0,8	47	60	2,8	124	12,5	74	50	100	3xM8
S 285	280	550	2.500	100	14	53	1	0,5	63	52	3,6	100	17	101	40	70	3xM12
S 360	360	710	1.800	162	22	85	1	0,5	81	107	5,1	120	17	101	50	90	3xM12
S 365	360	710	2.300	100	14	53	1	0,5	81	95	4,5	120	17	101	50	90	3xM12
S 440	440	0.865	1.700	162	22	85	1	0,5	99	175	6,3	140	17	101	50	110	3xM12
S 445	440	0.865	2.100	100	14	53	1	0,5	99	160	5,8	140	17	101	50	110	3xM12
S 630	630	1.240	1.500	162	22	85	1	0,5	142	285	10	143	26	134	55	100	3xM16
S 635	630	1.240	1.700	122	17	64	1	0,5	142	275	9,8	143	26	134	55	100	3xM10
S 760	760	1.485	1.400	162	22	85	1	0,5	170	460	12,5	163	26	134	60	120	3xM16
S 765	760	1.485	1.600	122	17	64	1	0,5	170	450	12,4	163	26	134	60	120	3xM16
S 950	950	1.820	1.300	162	22	85	1	0,5	209	865	17	190	26	134	70	150	3xM16
S 955	950	1.820	1.500	122	17	64	1	0,5	209	855	16,5	190	26	134	70	150	3xM16
S 1130	1.130	2.200	1.200	180	25	95	1	0,5	252	585	16	164	31	155	60	115	6xM16
S 1135	1.130	2.200	1.500	129	18	68	1	0,5	252	550	15	164	31	155	60	115	6xM16

Schmidt-Kupplung® ► Standard

Symbiosis of performance, compact design and generous offset capacity

Hub version 5: flange-mounting

	T _{KN} (Nm)	T _{K max} (Nm)	n _{max} (1/min)	ΔK _v (mm)	ΔK _{r min} (mm)	ΔK _r (mm)	ΔK _a (mm)	ΔK _w (°)	C _T (kNm/rad)	J (kg cm ²)	m (kg)	ØR (mm)	H (mm)	L (mm)	Ød (mm)	ØF (mm)	Skg
S 1320	1.320	2.580	1.200	180	25	95	1	0,5	296	885	19	184	31	155	70	135	6xM16
S 1325	1.320	2.580	1.400	129	18	68	1	0,5	296	850	18	184	31	155	70	135	6xM16
S 1520	1.520	2.965	1.100	180	25	95	1	0,5	340	1.310	22,5	204	31	155	80	155	6xM16
S 1525	1.520	2.965	1.300	129	18	68	1	0,5	340	1.265	22	204	31	155	80	155	6xM16
S 2160	2.160	4.220	1.000	219	30	115	2	0,3	484	1.700	30	200	33	196	80	150	6xM20
S 2165	2.160	4.220	1.200	162	22	85	2	0,3	484	1.500	26	200	33	196	80	150	6xM20
S 2870	2.875	5.625	0.900	219	30	115	2	0,3	645	3.500	38	250	33	196	100	200	6xM20
S 2875	2.875	5.625	1.000	162	22	85	2	0,3	645	3.400	37	250	33	196	100	200	6xM20

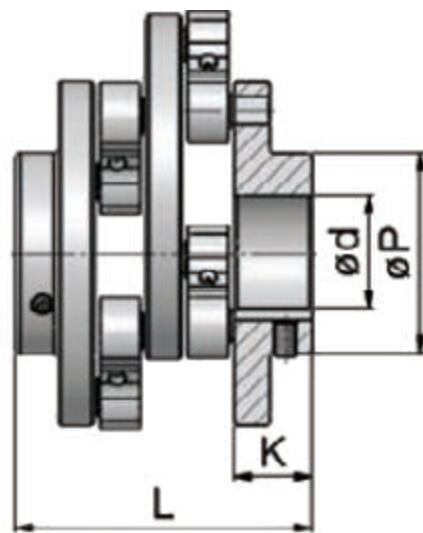
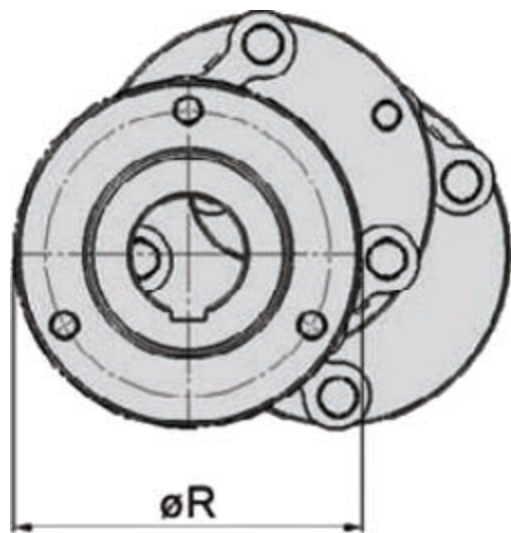
Order Example 1: S 210.55 Order Example 2: S 445.55

S 445	55
Type Schmidt-Kupplung® Standard S 445	both sides flange-mounting

To ensure the correct selection of the Schmidt-Kupplung® please use the TD Calculator of the column Schmidt-Kupplung® or please use our selection procedure and legend area to download the required information.

Schmidt-Kupplung® ► Standard

Symbiosis of performance, compact design and generous offset capacity



Hub version 6: standard hub

	T_{KN} (Nm)	$T_{K \max}$ (Nm)	n_{\max} (1/min)	ΔK_v (mm)	$\Delta K_r \min$ (mm)	ΔK_r (mm)	ΔK_a (mm)	ΔK_w (°)	C_T (kNm/rad)	J (kg cm ²)	m (kg)	$\varnothing R$ (mm)	K (mm)	L (mm)	$\varnothing P$ (mm)	$\varnothing d \max$ (mm)
S 35	35	65	3.100	45	6	23	1	0,8	7	2,2	0,6	52	16	60	50	25
S 40	45	85	1.900	95	13	50	1	0,8	10	4,2	0,8	62	16	60	60	36
S 45	45	85	2.800	45	6	23	1	0,8	10	4,4	0,9	62	16	60	60	25
S 115	110	210	3.500	64	9	34	1	0,8	24	13	1,9	74	22,5	94	70	30
S 150	150	290	2.200	126	17	66	1	0,8	33	27,3	2,4	94	27,5	104	56	36
S 155	150	290	3.100	64	9	34	1	0,8	33	25,9	2,3	94	27,5	104	56	36
S 210	210	410	1.900	126	17	66	1	0,8	47	77,9	4,1	124	27,5	104	70	40
S 215	210	410	2.700	64	9	34	1	0,8	47	75	4	124	27,5	104	70	40
S 285	280	550	2.500	100	14	53	1	0,5	63	54	4,2	100	38	143	53	36
S 360	360	710	1.800	162	22	85	1	0,5	81	115	6	120	38	143	70	45
S 365	360	710	2.300	100	14	53	1	0,5	81	109	5,7	120	38	143	70	45
S 440	440	865	1.700	162	22	85	1	0,5	99	205	8,4	140	38	143	80	50
S 445	440	865	2.100	100	14	53	1	0,5	99	194	7,5	140	38	143	80	50
S 630	630	1.240	1.500	162	22	85	1	0,5	142	295	11,5	143	40	162	77	50
S 635	630	1.240	1.700	122	17	64	1	0,5	142	290	10	143	40	162	77	50
S 760	760	1.485	1.400	162	22	85	1	0,5	170	475	14	163	44	170	90	60
S 765	760	1.485	1.600	122	17	64	1	0,5	170	465	13,5	163	44	170	90	60
S 950	950	1.820	1.300	162	22	85	1	0,5	209	970	20	190	55	192	110	70
S 955	950	1.820	1.500	122	17	64	1	0,5	209	955	20	190	55	192	110	70
S 1130	1.130	2.200	1.200	180	25	95	1	0,5	252	590	17,5	164	46	185	80	50
S 1135	1.130	2.200	1.500	129	18	68	1	0,5	252	570	17	164	46	185	80	50
S 1320	1.320	2.580	1.200	180	25	95	1	0,5	296	950	21,5	184	51	195	90	60



Schmidt-Kupplung® ► Standard

Symbiosis of performance, compact design and generous offset capacity

Hub version 6: standard hub

	T _{KN} (Nm)	T _{K max} (Nm)	n _{max} (1/min)	ΔK _v (mm)	ΔK _{r min} (mm)	ΔK _r (mm)	ΔK _a (mm)	Δ K _w (°)	C _T (kNm/rad)	J (kg cm ²)	m (kg)	ØR (mm)	K (mm)	L (mm)	ØP (mm)	Ød max (mm)
S 1325	1.320	2.580	1.400	129	18	68	1	0,5	296	0.920	21	184	51	195	90	60
S 1520	1.520	2.965	1.100	180	25	95	1	0,5	340	1.440	27	204	61	215	110	70
S 1525	1.520	2.965	1.300	129	18	68	1	0,5	340	1.400	26	204	61	215	110	70
S 2160	2.160	4.220	1.000	219	30	115	2	0,3	484	1.750	32	200	53	236	110	70
S 2165	2.160	4.220	1.200	162	22	85	2	0,3	484	1.675	31	200	53	236	110	70
S 2870	2.875	5.625	0.900	219	30	115	2	0,3	645	3.950	46	250	68	266	120	80
S 2875	2.875	5.625	1.000	162	22	85	2	0,3	645	3.800	45	250	68	266	120	80

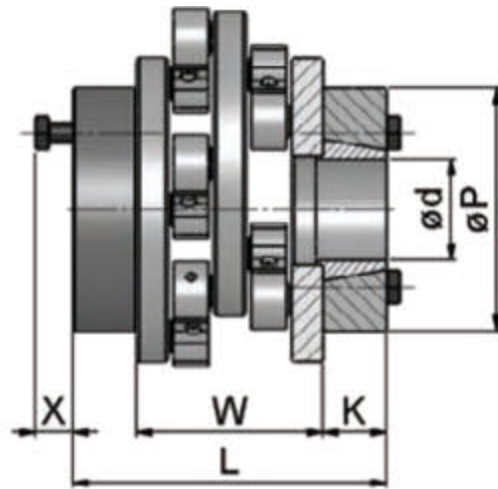
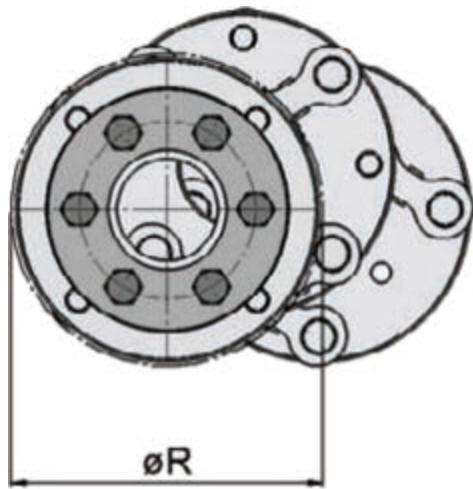
Order Example 1: S 210.66 Ø35 Ø35 Order Example 2: S 445.66 Ø45 Ø45

S 445	66	Ø45 Ø45
Type Schmidt-Kupplung® Standard S 445	both sides standard hub	bore diameters

To ensure the correct selection of the Schmidt-Kupplung® please use the TD Calculator of the column Schmidt-Kupplung® or please use our selection procedure and legend area to download the required information.

Schmidt-Kupplung® ► Power Plus

More torque transmission while retaining compact design



Hub version 3: locking-assembly

	T_{KN} (Nm)	$T_{K \max}$ (Nm)	n_{\max} (1/min)	ΔK_v (mm)	$\Delta K_r \min$ (mm)	ΔK_r (mm)	ΔK_a (mm)	ΔK_w (°)	C_T (kNm/rad)	J (kg cm ²)	m (kg)	$\varnothing R$ (mm)	L (mm)	X (mm)	W (mm)	K (mm)	$\varnothing P$ (mm)	standard bore diameters (mm)
P 45	45	90	3.100	45	6	23	1	0,5	10	2,7	0,8	52	74	9	44	15	47	15, 16
P 60	60	115	2.800	45	6	23	1	0,5	13	4,2	1,0	62	74	9	44	15	47	15, 16
P 110	110	210	1.600	95	13	50	1	0,5	24	29,2	1,6	84	82	10	44	19	50	24, 25
P 115	110	210	2.400	45	6	23	1	0,5	24	28,9	1,5	84	82	10	44	19	50	24, 25
P 200	200	385	3.100	64	9	34	1	0,5	44	36,7	3,5	94	116	15	74	21	76	25, 28, 30
P 250	250	490	3.100	64	9	34	1	0,5	56	33,9	3,3	95	112	17	74	19	66	24, 25
P 280	280	550	1.900	126	17	66	1	0,5	63	110,2	6,1	124	124	17	74	25	96	30, 32, 35, 40
P 285	280	550	2.700	64	9	34	1	0,5	63	106,4	5,9	124	124	17	74	25	96	30, 32, 35, 40
P 350	350	690	1.900	126	17	66	1	0,5	79	115,8	6,3	124	124	17	74	25	96	30, 32, 35, 40
P 355	350	690	2.700	64	9	34	1	0,5	79	110,9	6,1	124	124	17	74	25	96	30, 32, 35, 40
P 590	590	1.155	1.700	162	22	85	1	0,5	132	239	9,8	140	151	17	101	25	96	35, 40
P 595	590	1.155	2.100	100	14	53	1	0,5	132	227	9,5	140	151	17	101	25	96	35, 40
P 700	700	1.365	1.600	162	22	85	1	0,5	156	415	13,2	160	161	23	101	30	115	42, 45, 50
P 705	700	1.365	2.000	100	14	53	1	0,5	156	399	12,8	160	161	23	101	30	115	42, 45, 50
P 1010	1.010	1.980	1.400	162	22	85	1	0,5	227	570	18	164	194	23	134	30	112	42, 45, 50
P 1015	1.010	1.980	1.600	122	17	64	1	0,5	227	560	17,5	164	194	23	134	30	112	42, 45, 50
P 1580	1.580	3.095	1.300	162	22	85	1	0,5	355	1.120	24,5	193	202	24	134	34	120	55, 60
P 1585	1.580	3.095	1.500	122	17	64	1	0,5	355	1.100	24	193	202	24	134	34	120	55, 60
P 2880	2.880	5.620	1.200	162	22	85	2	0,3	644	2.050	40	200	276	30	196	40	155	60, 70
P 3830	3.830	7.500	0.900	219	30	115	2	0,3	860	4.700	58	250	276	30	196	40	155	60, 70
P 3835	3.830	7.500	1.000	162	22	85	2	0,3	860	4.250	53	250	276	30	196	40	155	60, 70

Schmidt-Kupplung® ► Power Plus

More torque transmission while retaining compact design

Hub version 3: locking-assembly

	T _{KN} (Nm)	T _{K max} (Nm)	n _{max} (1/min)	ΔK _v (mm)	ΔK _{r min} (mm)	ΔK _r (mm)	ΔK _a (mm)	ΔK _w (°)	C _T (kNm/rad)	J (kg cm ²)	m (kg)	ØR (mm)	L (mm)	X (mm)	W (mm)	K (mm)	ØP (mm)	standard bore diameters (mm)
P 4800	4.8	9.38	900	219	30	115	2	0,3	1.075	5	61	250	284	31	196	44	170	70, 75, 80
P 4805	4.8	9.38	1	162	22	85	2	0,3	1.075	4.5	55	250	284	31	196	44	170	70, 75, 80
P 6610	6.61	12.94	800	219	30	115	2	0,2	1.483	7.575	73	280	296	30	196	50	185	85, 90
P 6615	6.61	12.94	1	162	22	85	2	0,2	1.483	7.5	73	280	296	30	196	50	185	85, 90

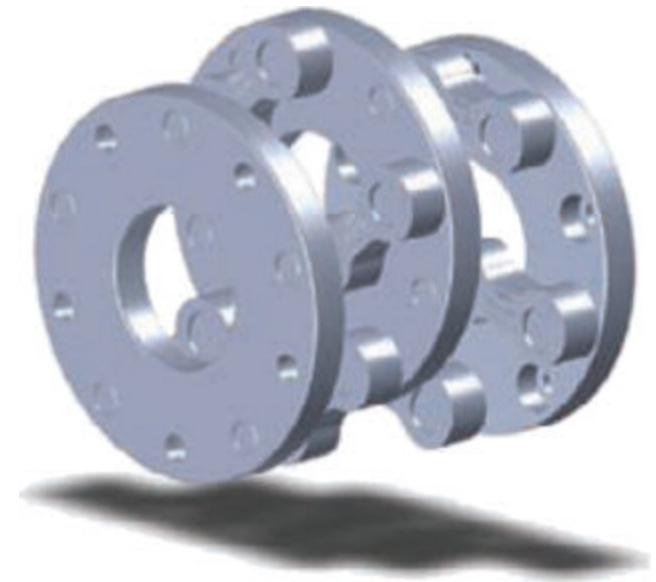
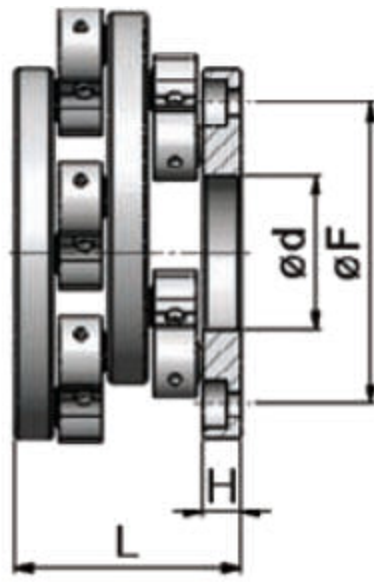
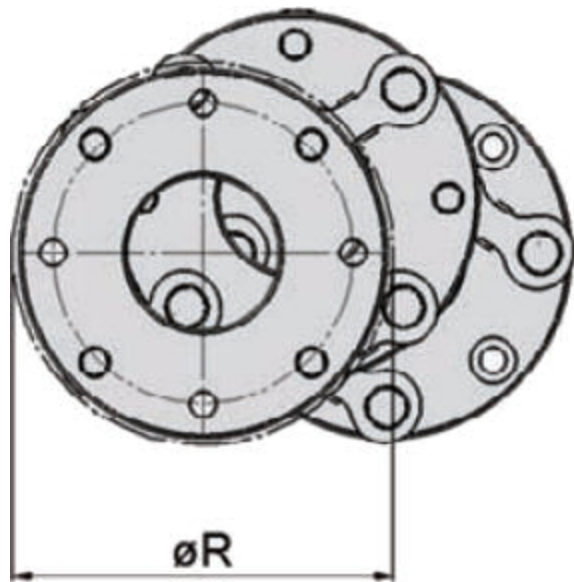
Order Example 1: P 350.33 Ø30 Ø40 Order Example 2: P 595.33 Ø35 Ø40

P 595	33	Ø35 Ø40
Type Schmidt-Kupplung® Power Plus P 595	both sides locking-assembly	bore diameters

To ensure the correct selection of the Schmidt-Kupplung® please use the TD Calculator of the column Schmidt-Kupplung® or please use our selection procedure and legend area to download the required information.

Schmidt-Kupplung® ► Power Plus

More torque transmission while retaining compact design



Hub version 5: flange-mounting

	T_{KN} (Nm)	$T_{K max}$ (Nm)	n_{max} (1/min)	ΔK_V (mm)	$\Delta K_r min$ (mm)	ΔK_r (mm)	ΔK_a (mm)	ΔK_w (°)	C_T (kNm/rad)	J (kg cm ²)	m (kg)	$\varnothing R$ (mm)	H (mm)	L (mm)	$\varnothing d$ (mm)	$\varnothing F$ (mm)	S_{kg}
P 45	45	90	3.100	45	6	23	1	0,5	10	1,8	0,4	52	8	44	22	35	4xM6
P 60	60	115	2.800	45	6	23	1	0,5	13	3,1	0,6	62	8	44	25	45	4xM6
P 110	110	210	1.600	95	13	50	1	0,5	24	9,1	1,3	84	8	44	40	67	5xM6
P 115	110	210	2.400	45	6	23	1	0,5	24	8,8	0,9	84	8	44	40	67	5xM6
P 200	200	385	3.100	64	9	34	1	0,5	44	23	1,8	94	12,5	74	45	70	4xM8
P 250	250	490	3.100	64	9	34	1	0,5	56	25	2	95	12,5	74	45	71	5xM8
P 280	280	550	1.900	126	17	66	1	0,5	63	63	3	124	12,5	74	50	98	4xM8
P 285	280	550	2.700	64	9	34	1	0,5	63	61	2,9	124	12,5	74	50	98	4xM8
P 350	350	690	1.900	126	17	66	1	0,5	79	65	3,2	124	12,5	74	50	100	5xM8
P 355	350	690	2.700	64	9	34	1	0,5	79	63	3	124	12,5	74	50	100	5xM8
P 480	480	945	2.300	100	14	53	1	0,5	108	105	5	120	17	101	50	90	4xM12
P 590	590	1.155	1.700	162	22	85	1	0,5	132	187	6,8	140	17	101	50	110	4xM12
P 595	590	1.155	2.100	100	14	53	1	0,5	132	175	6,3	140	17	101	50	110	4xM12
P 700	700	1.365	1.600	162	22	85	1	0,5	156	304	8	160	17	101	60	130	4xM12
P 705	700	1.365	2.000	100	14	53	1	0,5	156	295	7,4	160	17	101	60	130	4xM12
P 1010	1.010	1.980	1.400	162	22	85	1	0,5	227	480	13,2	164	26	134	60	120	4xM16
P 1015	1.010	1.980	1.600	122	17	64	1	0,5	227	475	13	164	26	134	60	120	4xM12
P 1580	1.580	3.095	1.300	162	22	85	1	0,5	355	920	18	193	26	134	70	150	5xM16
P 1585	1.580	3.095	1.500	122	17	64	1	0,5	355	910	17,5	193	26	134	70	150	5xM16
P 2880	2.880	5.620	1.200	162	22	85	2	0,3	644	1.600	28	200	33	196	80	150	4xM20
P 3830	3.830	7.500	0.900	219	30	115	2	0,3	860	3.750	41	250	33	196	100	200	8xM20

Schmidt-Kupplung® ► Power Plus

More torque transmission while retaining compact design

Hub version 5: flange-mounting

	T _{KN} (Nm)	T _{K max} (Nm)	n _{max} (1/min)	ΔK _v (mm)	ΔK _{r min} (mm)	ΔK _r (mm)	ΔK _a (mm)	ΔK _w (°)	C _T (kNm/rad)	J (kg cm ²)	m (kg)	ØR (mm)	H (mm)	L (mm)	Ød (mm)	ØF (mm)	Skg
P 3835	3.830	7.500	1.000	162	22	85	2	0,3	0.860	3.700	41	250	33	196	100	200	8xM20
P 4800	4.800	9.380	0.900	219	30	115	2	0,3	1.075	4.080	45	250	33	196	100	200	10xM20
P 4805	4.800	9.380	1.000	162	22	85	2	0,3	1.075	4.000	43	250	33	196	100	200	10xM20
P 6610	6.610	12.94	0.800	219	30	115	2	0,2	1.483	8.700	52	280	33	196	150	230	12xM20
P 6615	6.610	12.94	1.000	162	22	85	2	0,2	1.483	5.600	43	280	33	196	150	230	12xM20

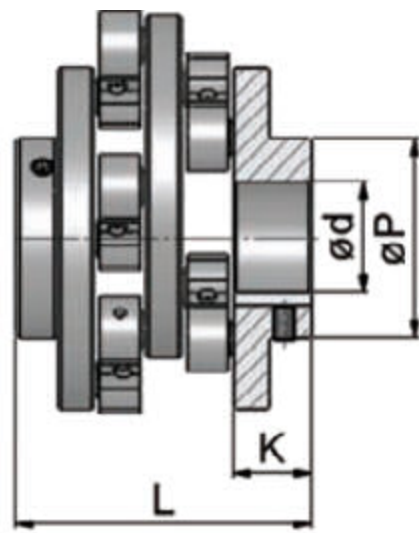
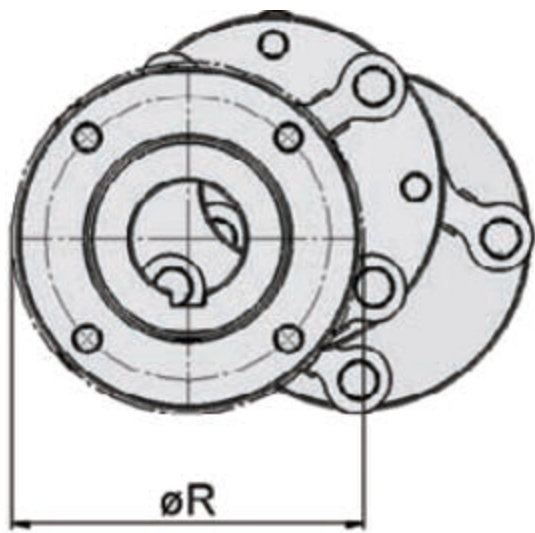
Order Example 1: P 350.55 Order Example 2: P 595.55

P 595	55
Type Schmidt-Kupplung® Power Plus P 595	both sides flange-mounting

To ensure the correct selection of the Schmidt-Kupplung® please use the TD Calculator of the column Schmidt-Kupplung® or please use our selection procedure and legend area to download the required information.

Schmidt-Kupplung® ► Power Plus

More torque transmission while retaining compact design



Hub version 6: standard hub

	T_{KN} (Nm)	$T_{K\ max}$ (Nm)	$n_{\ max}$ (1/min)	ΔK_v (mm)	$\Delta K_r\ min$ (mm)	ΔK_r (mm)	ΔK_a (mm)	ΔK_w (°)	C_T (kNm/rad)	J (kg cm ²)	m (kg)	$\varnothing R$ (mm)	L (mm)	$\varnothing P$ (mm)	K (mm)	$\varnothing d_{\ max}$ (mm)
P 45	45	90	3.100	45	6	23	1	0,5	10	2,3	0,6	52	60	50	16	25
P 60	60	115	2.800	45	6	23	1	0,5	13	4,3	0,8	62	60	60	16	36
P 110	110	210	1.600	95	13	50	1	0,5	24	12,3	1,6	84	78	50	25	30
P 115	110	210	2.400	45	6	23	1	0,5	24	11,7	1,4	84	78	50	25	30
P 200	200	385	3.100	64	9	34	1	0,5	44	31,5	3,2	94	104	56	27,5	36
P 250	250	490	3.100	64	9	34	1	0,5	56	29,9	2,6	95	104	56	27,5	36
P 280	280	550	1.900	126	17	66	1	0,5	63	82,6	4,3	124	104	70	27,5	40
P 285	280	550	2.700	64	9	34	1	0,5	63	78,8	4,1	124	104	70	27,5	40
P 350	350	690	1.900	126	17	66	1	0,5	79	88,2	4,5	124	104	70	27,5	40
P 355	350	690	2.700	64	9	34	1	0,5	79	83,3	4,3	124	104	70	27,5	40
P 480	480	945	2.300	100	14	53	1	0,5	108	117	6,1	120	143	70	38	45
P 590	590	1.155	1.700	162	22	85	1	0,5	132	217	8,3	140	143	80	38	50
P 595	590	1.155	2.100	100	14	53	1	0,5	132	205	7,9	140	143	80	38	50
P 700	700	1,4	1.600	162	22	85	1	0,5	156	348	10,2	160	151	80	42	50
P 705	700	1.365	2.000	100	14	53	1	0,5	156	331	9,9	160	143	80	38	50
P 1010	1.010	1.980	1.400	162	22	85	1	0,5	227	505	14,5	164	170	90	44	60
P 1015	1.010	1.980	1.600	122	17	64	1	0,5	227	495	14	164	170	90	44	60
P 1580	1.580	3.095	1.300	162	22	85	1	0,5	355	1.065	22	193	192	110	55	70
P 1585	1.580	3.095	1.500	122	17	64	1	0,5	355	1.045	21,5	193	192	110	55	70
P 2880	2.880	5.620	1.200	162	22	85	2	0,3	644	1.800	33	200	236	110	53	70
P 3830	3.830	7.500	0.900	219	30	115	2	0,3	860	4.250	49	250	266	120	68	80
P 3835	3.830	7.500	1.000	162	22	85	2	0,3	860	4.050	47	250	266	120	68	80

Schmidt-Kupplung® ► Power Plus

More torque transmission while retaining compact design

Hub version 6: standard hub

	T _{KN} (Nm)	T _{K max} (Nm)	n _{max} (1/min)	ΔK _v (mm)	ΔK _{r min} (mm)	ΔK _r (mm)	ΔK _a (mm)	ΔK _w (°)	C _T (kNm/rad)	J (kg cm ²)	m (kg)	ØR (mm)	L (mm)	ØP (mm)	K (mm)	Ød _{max} (mm)
P 4800	4.800	9.380	0.900	219	30	115	2	0,3	1.075	4.550	52	250	276	120	73	80
P 4805	4.800	9.380	1.000	162	22	85	2	0,3	1.075	4.325	50	250	276	120	73	80
P 6610	6.610	12.940	0.800	219	30	115	2	0,2	1.483	7.425	70	280	322	150	96	95
P 6615	6.610	12.940	1.000	162	22	85	2	0,2	1.483	7.025	67	280	322	150	96	95

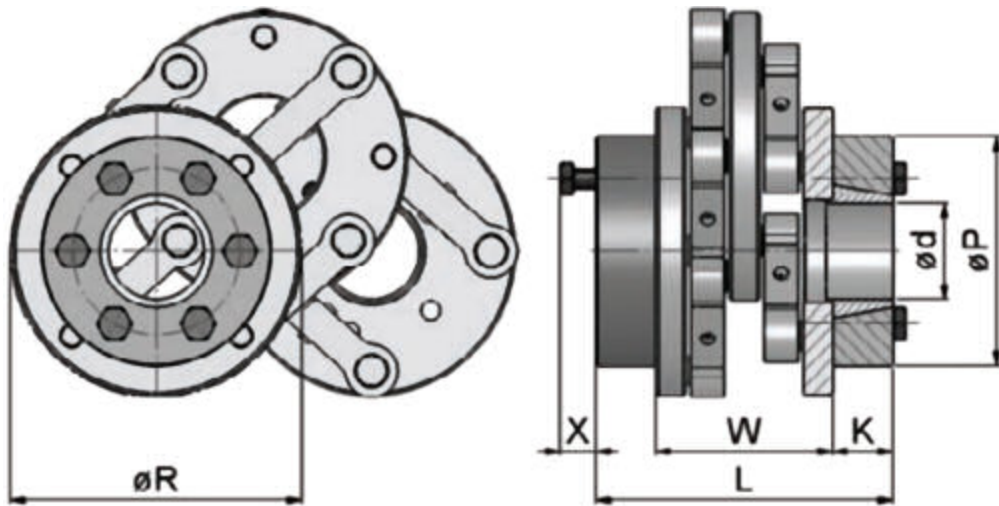
Order Example 1: P 350.66 Ø35 Ø35 Order Example 2: P 595.66 Ø45 Ø45

P 595	66	Ø45 Ø45
Type Schmidt-Kupplung® Power Plus P 595	both sides standard hub	bore diameters

To ensure the correct selection of the Schmidt-Kupplung® please use the TD Calculator of the column Schmidt-Kupplung® or please use our selection procedure and legend area to download the required information.

Schmidt-Kupplung® ► Offset Plus

Extreme parallel shaft offset while retaining compact design



Hub version 3: locking-assembly

	T _{KN} (Nm)	T _{K max} (Nm)	n _{max} (1/min)	ΔK _V (mm)	ΔK _{r min} (mm)	ΔK _r (mm)	ΔK _a (mm)	ΔK _w (°)	C _T (kNm/rad)	J (kg cm ²)	m (kg)	ØR (mm)	L (mm)	X (mm)	W (mm)	K (mm)	ØP (mm)	standard bore diameters (mm)
V 65	65	126	1.300	151	21	79	1	0,5	14	30,2	1,7	84	82	11	44	19	50	24, 25
V 210	210	410	1.500	216	30	114	1	0,5	47	92	5,2	124	116	15	74	21	76	25, 28, 30
V 290	290	620	1.000	360	50	190	1	0,5	71	570,8	12,6	170	124	17	74	25	96	30, 32, 35, 40
V 440	440	865	1.500	216	30	114	1	0,5	99	237	9,8	140	151	17	101	25	96	30, 32, 35, 40
V 680	680	1.340	0.900	396	55	209	1	0,3	154	1.11	20	200	151	17	101	25	96	30, 32, 35, 40
V 700	700	1.365	1.400	216	30	114	1	0,5	156	391	12,2	160	151	17	101	25	96	30, 32, 35, 40
V 760	760	1.485	1.200	216	30	114	1	0,5	170	550	17,5	163	194	23	134	30	115	42, 45, 50
V 950	950	1.820	1.000	270	37	142	1	0,5	209	945	21,5	190	194	23	134	30	115	42, 45, 50
V 955	950	1.820	1.100	216	30	114	1	0,5	209	1.015	22,5	190	194	23	134	30	115	42, 45, 50
V 1200	1.200	2.350	0.700	432	60	228	1	0,3	269	2.240	32,5	230	194	23	134	30	115	42, 45, 50
V 1320	1.320	2.580	1.000	234	32	123	1	0,5	296	1.080	26	184	223	24	155	34	120	50, 55, 60
V 1520	1.520	2.965	0.800	320	44	169	1	0,5	340	1.610	31	204	223	24	155	34	120	50, 55, 60
V 1525	1.520	2.965	1.000	234	32	123	1	0,5	340	1.540	30	204	223	24	155	34	120	50, 55, 60
V 2100	2.100	4.110	0.600	504	70	266	1	0,3	471	3.910	53	264	235	30	155	40	155	60, 65, 70
V 2160	2.160	4.220	0.900	270	37	142	2	0,3	484	2.075	40	200	276	30	196	40	155	60, 65, 70
V 2875	2.875	5.625	0.800	270	37	142	2	0,3	645	4.525	56	250	284	31	196	44	170	70, 75, 80
V 3300	3.300	6.470	0.500	522	72	275	2	0,2	742	7.550	74	280	284	31	196	44	170	70, 75, 80
V 3840	3.830	7.500	0.800	270	37	142	2	0,3	860	4.450	53	250	276	30	196	40	155	60, 65, 70

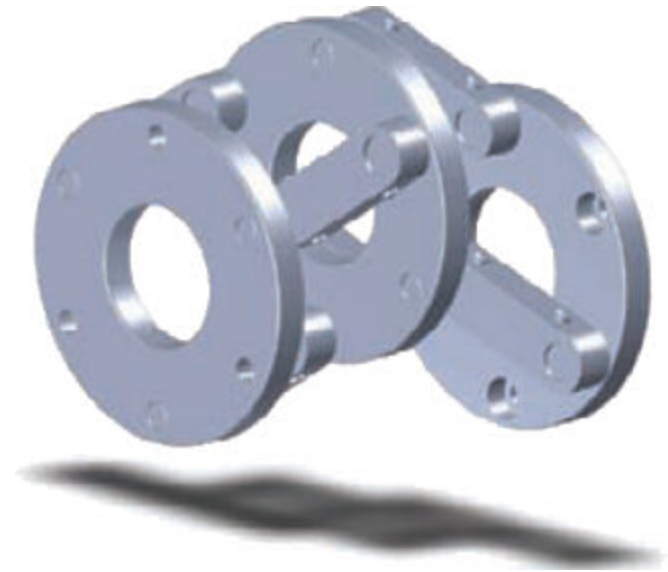
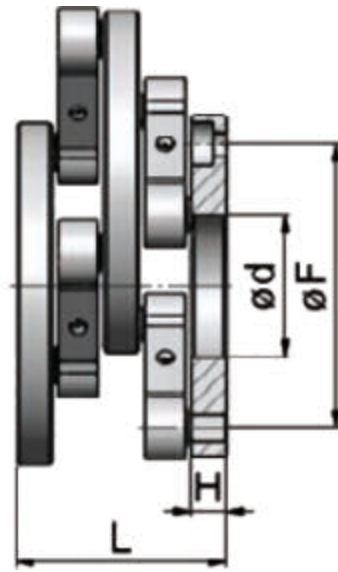
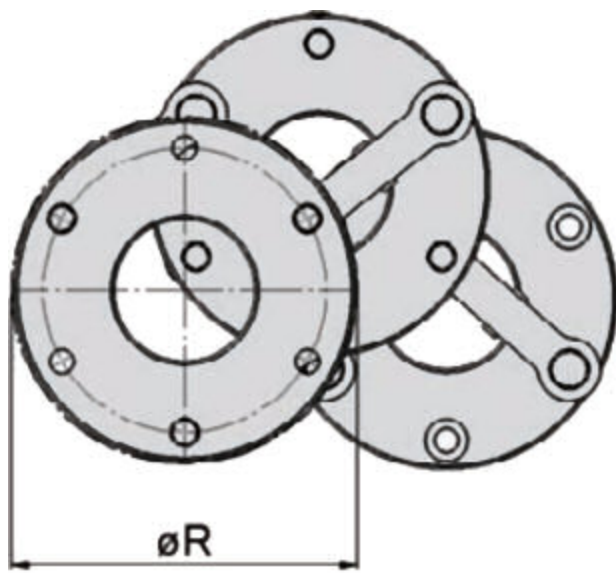
Order Example 1: V 290.33 Ø30 Ø40 Order Example 2: V 440.33 Ø32 Ø40

V 440	33	Ø32 Ø40
Type Schmidt-Kupplung® Offset Plus V 440	both sides locking-assembly	bore diameters

To ensure the correct selection of the Schmidt-Kupplung® please use the TD Calculator of the column Schmidt-Kupplung® or please use our selection procedure and legend area to download the required information.

Schmidt-Kupplung® ► Offset Plus

Extreme parallel shaft offset while retaining compact design



Hub version 5: flange-mounting

	T_{KN} (Nm)	$T_{K max}$ (Nm)	n_{max} (1/min)	ΔK_V (mm)	$\Delta K_{r min}$ (mm)	$\Delta K_{r max}$ (mm)	ΔK_a (mm)	ΔK_w (°)	C_T (kNm/rad)	J (kg cm ²)	m (kg)	$\varnothing R$ (mm)	H (mm)	L (mm)	$\varnothing d$ (mm)	$\varnothing F$ (mm)	S_{kg}
V 65	65	126	1.300	151	21	79	1	0,5	14	8,9	1,1	84	8	48	40	67	3xM6
V 210	210	410	1.500	216	30	114	1	0,5	47	78	3,7	124	12,5	74	50	98	3xM8
V 290	290	620	1.000	360	50	190	1	0,5	71	285	7	170	12,5	74	60	148	3xM8
V 440	440	865	1.500	216	30	114	1	0,5	99	187	6,8	140	17	101	50	110	3xM12
V 680	680	1.340	0.900	396	55	209	1	0,3	154	790	13	200	17	101	80	170	3xM12
V 700	700	1.365	1.400	216	30	114	1	0,5	156	313	8,6	160	17	101	60	130	4xM12
V 760	760	1.485	1.200	216	30	114	1	0,5	170	465	12,7	163	26	134	60	120	3xM16
V 950	950	1.820	1.000	270	37	142	1	0,5	209	930	18	190	26	134	70	150	3xM16
V 955	950	1.820	1.100	216	30	114	1	0,5	209	875	17	190	26	134	70	150	3xM16
V 1200	1.200	2.350	0.700	432	60	228	1	0,3	269	2.040	26	230	26	134	100	190	3xM16
V 1320	1.320	2.580	1.000	234	32	123	1	0,5	296	910	20	184	31	155	70	135	6xM16
V 1520	1.520	2.965	0.800	320	44	169	1	0,5	340	1.540	26	204	31	155	80	130	6xM16
V 1525	1.520	2.965	1.000	234	32	123	1	0,5	340	1.355	23	204	31	155	80	155	6xM16
V 2100	2.100	4.110	0.600	504	70	266	1	0,3	471	4.070	44	264	31	155	80	130	6xM16
V 2160	2.160	4.220	0.900	270	37	142	2	0,3	484	1.850	32	200	33	196	80	150	6xM20
V 2875	2.875	5.625	0.800	270	37	142	2	0,3	645	3.650	40	250	33	196	100	200	6xM20
V 3300	3.300	6.470	0.500	522	72	275	2	0,2	742	6.800	59	280	33	196	100	230	6xM20
V 3840	3.830	7.500	0.800	270	37	142	2	0,3	860	4.100	44	250	33	196	100	200	8xM20

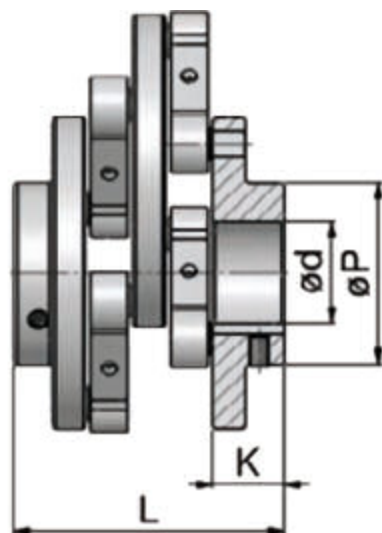
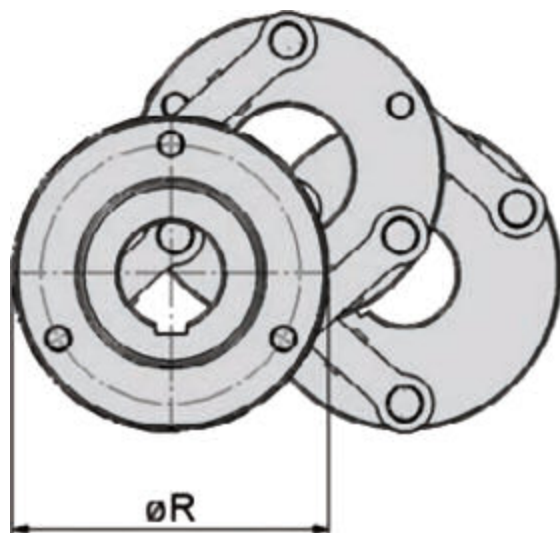
Order Example 1: V 210.55 Order Example 2: V 680.55

V 680	55
Type Schmidt-Kupplung® Offset Plus V 680	both sides flange-mounting

To ensure the correct selection of the Schmidt-Kupplung® please use the TD Calculator of the column Schmidt-Kupplung® or please use our selection procedure and legend area to download the required information.

Schmidt-Kupplung® ► Offset Plus

Extreme parallel shaft offset while retaining compact design



Hub version 6: standard hub

	T_{KN} (Nm)	$T_{K\ max}$ (Nm)	$n_{\ max}$ (1/min)	ΔK_v (mm)	$\Delta K_r\ \min$ (mm)	ΔK_r (mm)	ΔK_a (mm)	ΔK_w (°)	C_T (kNm/rad)	J (kg cm ²)	m (kg)	$\varnothing R$ (mm)	L (mm)	$\varnothing P$ (mm)	K (mm)	$\varnothing d_{\ max}$ (mm)
V 65	65	126	1.300	151	21	79	1	0,5	14	12,6	1,4	84	72	50	20	30
V 210	210	410	1.500	216	30	114	1	0,5	47	86	4,4	124	104	70	27,5	40
V 290	290	620	1.000	360	50	190	1	0,5	71	339,3	9,2	170	124	90	37,5	50
V 440	440	865	1.500	216	30	114	1	0,5	99	215	8,2	140	143	80	38	50
V 680	680	1.340	0.900	396	55	209	1	0,3	154	1.090	19	200	151	80	42	50
V 700	700	1.365	1.400	216	30	114	1	0,5	156	371	10,8	160	151	80	42	50
V 760	760	1.485	1.200	216	30	114	1	0,5	170	485	14	163	170	90	44	60
V 950	950	1.820	1.000	270	37	142	1	0,5	209	985	20,5	190	192	110	55	70
V 955	950	1.820	1.100	216	30	114	1	0,5	209	915	19	190	192	110	55	70
V 1200	1.200	2.350	0.700	432	60	228	1	0,3	269	2.235	30,5	230	202	120	60	80
V 1320	1.320	2.580	1.000	234	32	123	1	0,5	296	990	22,5	184	195	90	51	60
V 1520	1.520	2.965	0.800	320	44	169	1	0,5	340	1.560	29	204	215	110	61	70
V 1525	1.520	2.965	1.000	234	32	123	1	0,5	340	1.490	27,5	204	215	110	61	70
V 2100	2.100	4.110	0.600	504	70	266	1	0,3	471	3.690	47	264	215	120	61	80
V 2160	2.160	4.220	0.900	270	37	142	2	0,3	484	1.825	33	200	236	110	53	70
V 2875	2.875	5.625	0.800	270	37	142	2	0,3	645	4.075	47	250	266	120	68	80
V 3300	3.300	6.470	0.500	522	72	275	2	0,2	742	7.100	65	280	266	120	68	80
V 3840	3.830	7.500	0.800	270	37	142	2	0,3	860	4.425	51	250	266	120	68	80

Order Example 1: V 210.66 $\varnothing 35$ $\varnothing 35$ Order Example 2: V 680.66 $\varnothing 40$ $\varnothing 40$

P 595	66	$\varnothing 40$ $\varnothing 40$
Type Schmidt-Kupplung® Offset Plus V 680	both sides standard hub	bore diameters

To ensure the correct selection of the Schmidt-Kupplung® please use the TD Calculator of the column Schmidt-Kupplung® or please use our selection procedure and legend area to download the required information.

Schmidt-Kupplung®

Selection procedure and legend

1. Calculation of the design torque. Please multiply your continuous torque by the required performance factor (table 1) and the required service factor (table 2) to get the design torque.

An alternative:

simply use under www.schmidt-kupplung.com the TD Calculator of the column Schmidt-Kupplung®

Table 1: performance factor

speed range 1/min	service life (h)	performance factor
0-500	5	1,8
0-500	10	2,3
0-500	20	2,8
500-1.000	5	2,3
500-1.000	10	2,8
500-1.000	20	3,5
1.000-2.000	5	2,8
1.000-2.000	10	3,6
1.000-2.000	20	4,4
2.000-3.000	5	3,2
2.000-3.000	10	4
2.000-3.000	20	4,8

Table 2: service factor

uniform	1
light shocks	1,5
medium shocks	2
heavy shocks	2,5

2. Select a coupling size that has a continuous torque rating greater than your calculated design torque.

3. Make sure that the peak torque of the application does not exceed the maximum torque rating of the coupling.

4. Please check the coupling maximum speed to be sure it is within the rated maximum speed.

5. Make sure that the misalignment capability is sufficient. There is a trade-off between the radial, axial and angular misalignment capabilities. Be certain that the combined percentages of each do not exceed 100%.

Legend

Performance

T_{KN}	continuous torque rating of the coupling (Nm)
T_{K max}	maximum torque capacity of the coupling (Nm)
n_{max}	maximum speed of the coupling (1/min)
ΔK_v	maximum linear range of the coupling (mm)
ΔK_r	maximum radial offset capacity (mm)
ΔK_{r min}	minimum radial offset capacity (mm)
ΔK_a	maximum axial misalignment capacity (mm)
ΔK_w	maximum angular misalignment capacity (°)
C_T	torsional stiffness (kNm/rad)
J	moment of inertia (kg cm ²)
m	weight (kg)

Dimension

∅R	swing diameter (mm)
H	disc thickness (mm)
L	coupling length (mm)
X	mounting space (mm)
W	coupling basis (mm)
∅P	hub diameter (mm)
K	total hub length (mm)
∅d	bore diameter (mm)
∅F	bolt circle diameter (mm)
Skg	number of counter bores x bolt size



COPYRIGHT

"ABSSAC" is a registered trade mark 2375859

All rights are reserved.

The use of this catalogue is made available to you by Abszac Limited. The exclusive right to control the use of the copyright and trademarks on this site is controlled by Abszac Limited. These may not be copied, reproduced, published, distributed, modified or otherwise used in any form including electronic copying without the express permission of Abszac Limited. Abszac Limited has made all reasonable endeavor to ensure that the material on this site is accurate. You agree that Abszac Limited, nor any other person involved in creating or providing this catalogue shall be liable for any indirect or consequential damage arising from the use of any information contained in this catalogue.

The information contained in this catalogue is provided 'as is' without warranty of any kind, either expressed or implied. Abszac Limited assumes no responsibility for errors or omissions in this catalogue or other documents which are reference by or linked to this catalogue. This catalogue could include technical or other inaccuracies including typographical errors. Updates and changes are periodically added to the information herein; these changes will be incorporated in new editions of this catalogue. Abszac Limited may make improvements and/or changes in the product(s) or service(s) described in this publication at any time. You agree that the above terms represent the entire basis of the agreement between us, upon which you are permitted to enter this site and you agree that all relations between us are subject to the Law of England and Wales.



STANDARD CONDITIONS OF SALE

1. Interpretation
 - 1.1 In these Conditions:

"Buyer" means the person who accepts a quotation of the Seller for the sale of the Goods or whose order for the Goods is accepted by the Seller

"Goods" means the goods (including any instalment of the goods or any parts for them) which the Seller is to supply in accordance with these Conditions

"Seller" means ABSSAC LIMITED a company incorporated in England and whose registered number is 1677177.

"Conditions" means the standard terms and conditions of sale set out in this document and (unless the context otherwise requires) includes any special terms and conditions agreed in writing between the Buyer and the Seller

"Contract" means the Contract for the purchase and sale of the Goods

"Writing" includes telex, cable, facsimile transmission, E-Mail and comparable means of communication
 - 1.2 Any reference in these Conditions to any provision of a statute shall be construed as a reference to that provision as amended, re-enacted or extended at the relevant time
 - 1.3 The headings in these Conditions are for convenience only and shall not affect their interpretation
2. Basis of the sale
 - 2.1 Subject to Condition 3 below, the Seller shall sell and the Buyer shall purchase the Goods in accordance with any oral or written order of the Buyer which is accepted by the Seller, or any written quotation of the Seller which is accepted by the Buyer, subject to these Conditions which shall govern the Contract to the exclusion of any other terms and conditions subject to which any such quotation is accepted or purported to be accepted, or any such order is made or purported to be made, by the Buyer
 - 2.2 No variation, addition or waiver of any of these Conditions shall be effective unless it is in Writing and signed by a duly authorised representative of both the Seller and the Buyer
 - 2.3 The Seller's employees or agents are not authorised to make any representations concerning the Goods unless confirmed by the Seller in Writing. In entering into the Contract the Buyer acknowledges that it does not rely on any such representations which are not so confirmed
 - 2.4 Samples supplied and advice or recommendations as to storage, application or use of the Goods given by the Seller or its employees or agents to the Buyer or its employees or agents are for guidance only and any such matter which is not confirmed in Writing by the Seller is followed or acted upon entirely at the Buyer's own risk and accordingly the Seller shall not be liable for any such advice or recommendation which is not so confirmed then the Buyer should depend on their accuracy only after obtaining specific written confirmation to that effect from the Seller
 - 2.5 Any typographical, clerical or other error or omission in any sales literature, quotation, price list, acceptance of offer, invoice or other document or information issued by the Seller shall be subject to correction without any liability on the part of the Seller
3. Quotations and acceptance of orders
 - 3.1 Quotations issued by the Seller are invitations to order Goods from the Seller. No Contract will exist until the Seller has accepted the Buyer's order in accordance with condition 3.3.
 - 3.2 Subject to condition 3.1 the price in the quotation should be valid for a period of 30 days from the date of the quotation unless otherwise advised by the Seller in Writing
 - 3.3 The Seller shall not be bound by any order submitted by the Buyer unless and until confirmed by the Seller in Writing
 - 3.4 Scheduled call off purchase orders made by the Buyer with the Seller are for twelve month periods only, or until 19th December of that year, depending which comes first unless otherwise agreed in Writing by the Seller
 - 3.5 The Buyer is committed to purchasing any remaining amount of products on his purchase order if the Buyer decides to cancel the order mid schedule unless otherwise agreed in Writing by the Seller
- 3.6 No order which has been accepted by the Seller may be cancelled by the Buyer except with the agreement in Writing of the Seller on the terms that the Buyer shall indemnify the Seller in full against all loss (including loss of profit), costs (including the costs of all labour and materials used), damages, charges and expenses incurred by the Seller as a result of cancellation.
- 3.7 Compliance with United States Export Regulations

It is Absac's policy to request, if applicable, the end use and end user details in all sales and repairs of USA origin products and in all transfers of technical data or software to ensure compliance with applicable u.s. export control laws and regulations. Because the products you are purchasing may be used outside of the United States, we will need confirmation of the following from the (buyer). It is on the onus of the buyer to ensure that Absac is informed of the following information.

 - 1.1 (Buyer) will not export or re-export any USA origin products, technology or software to Cuba, Iran, Iraq, Libya, North Korea, Sudan, or Syria, unless otherwise authorized by the United States Government.
 - 2.1 (Buyer) will not sell, transfer, export or re-export any USA origin products for use in activities which involve the development, production, use or stockpiling of nuclear, chemical or biological weapons or missiles, nor use USA origin products in any facilities which are engaged in activities relating to such weapons.
 - 3.1 (Buyer) acknowledge that u.s. law prohibits the sale, transfer, export or re-export or other participation in any export transaction involving USA origin products with individuals or companies listed in the u.s. Commerce Department's Table of Denial Orders, the u.s. Treasury Department's list of Specially Designated Nationals or the u.s. Department of State's list of individuals debarred from receiving Munitions List items.
 - 4.1 (Buyer) will abide by all applicable u.s. export control laws and regulations for any products purchased from USA origin products, software or technology.
 - 5.1 (Buyer) agree that the export control requirements in No. 1-4 above shall survive the completion, early termination, cancellation or expiration of the applicable purchase order, agreement or contract.
4. Specifications
 - 4.1 The Buyer shall be responsible to the Seller for ensuring the accuracy of the terms of any order (including any applicable specification) submitted by the Buyer, and for giving the Seller any necessary information relating to the Goods within a sufficient time to enable the Seller to perform the Contract in accordance with its terms
 - 4.2 The quantity, quality and description of any specification for the Goods shall be those set out in the Seller's quotation (if accepted by the Buyer) or the Buyer's order (if accepted by the Seller)
 - 4.3 If Goods are supplied in accordance with the Buyer's specifications the Buyer shall be solely responsible for the specifications and ensuring that they are accurate
 - 4.4 If any technical calculations are made by the Seller using information supplied by the Buyer the Buyer accepts that they are responsible for supplying accurate technical information and accordingly the Seller is not liable in respect of calculations based on incorrect information given
 - 4.5 If Goods are to be manufactured or any process is to be applied to the Goods by the Seller in accordance with a specification or request submitted by the Buyer or should any change be made to the Goods at the request of the Buyer the Buyer shall indemnify the Seller against all loss damages costs and expenses awarded against or incurred by the Seller in connection with or paid or agreed to be paid by the Seller in settlement of any claims for infringement of any patent, copy right, design, trade mark or other industrial or intellectual property rights of any person which results from the Seller's use of the Buyers specification

- 4.6 The Seller reserves the rights to make any changes in the specification of the Goods which are required to conform with any applicable statutory or EC requirements or, where the Goods are to be supplied to the Seller's specification, which do not materially affect their quality or performance
- 4.7 At all times the buyer has the responsibility to adequately guard and maintain the product supplied in accordance with relevant operation manuals, service factors and health and safety legislation applicable for any product supplied by ABSSAC Limited.
- 4.8 The seller (Abszac Limited) shall not in any event be liable for any consequential damages, secondary charges, expenses for installing or disconnecting, or losses or injuries to persons or property resulting from any alleged defect in the product or any use of the product, and lor in manner that exceeds its design, duty cycle and or ability.
- 4.9 It remains the responsibility of the buyer to test any samples or other products that the seller will provide for fatigue, stress and general ability in the application. All products that the seller provides and are used in both real and test situations are considered by Abszac Ltd to have been thoroughly tested to meet and exceed the anticipated life and duty requirement of the product in its application by the buyer. It remains the responsibility of the buyerto give all technical information to the seller and all buyers are responsible for meeting health and safety measures and adequately guarding users and all associated parties against all and any possible failures in line with the health and safety requirements.
Other Where recommended guidelines of serviceable or replaceable parts and maintenance/inspection requirements are exceeded or ignored by the user and/or buyer, no warranty or other claim can or will exist. Where minimum or maximum values/sizes/limits/dimensions/fitting instructions and technical data of parts are ignored/abused/extended/not applied/not actioned or used in excess ofthe design or standard parameters ofthe product by the user and/or buyer then no warranty claim or other claim can exist.
No warranty or other claim can exist or be made by the user or buyer or other to the seller or its agent or other for any part used in motor sport, military or aviation. No warranty is given to this type of application.
All or any secondary or further processes/disassembly/machining/ heating/drying/coating or any other additional process the originally supplied product or associated part/product after dispatch from the seller or its agent voids any warranty claim or other claim.
It remains the responsibility of the buyer or user to advise us the seller of any and all certification/test/traceable certification requirement.
Conversations may be recorded as part of our ongoing customer service program.
5. Packaging
- 5.1 Packaging for the Goods shall be at the discretion of the Seller which has the right to pack the Goods in such a manner and with such materials and in such quantities as in his absolute discretion thinks fit unless detailed packaging instructions are received from the Buyer prior to agreeing a price for the Goods which the Seller agrees to in Writing
6. Price of the Goods
- 6.1 Price of the Goods shall be the Seller's quoted price or, where no price has been quoted (or a quoted price is no longer valid) the price listed in the Seller's published price list current at the date of acceptance of this order. Where the Goods are supplied for export from the United Kingdom, the Seller's published export price list shall apply. All prices quoted are valid for 30 days only or until earlier acceptance by the Buyer, after which time they may be altered by the Seller without given giving written notice to the Buyer
- 6.2 The price is exclusive of any applicable value added tax, which the Buyer shall be additionally liable to pay to the Seller
- 6.3 All prices stated shall be subject to variation at the sole discretion of the Seller at any time without prior notice and the Seller shall notify the Buyer of any variation before delivery of the Goods
7. Payment
- 7.1 Liability for payment for the Goods supplied to customers who have a trading account with the Seller shall arise on delivery and payment in cash is due 30 days from the date of the invoice or as otherwise specifically agreed in Writing by the Seller. Payment shall be due and the company shall be entitled to sue for the price whether or not property in the Goods has passed by virtue of condition 10 and notwithstanding the delivery may not have taken place as a result of the Buyer's wrongful or refusal to accept delivery. The time of payment of the price shall be of the essence of the Contract
- 7.2 Liability for payment forthe Goods supplied on a proforma invoice basis for customers who do not have a trading account with the Seller shall be prior to delivery of the Goods. The ti me of payment of the price shall be of the essence of the Contract. It is the Buyer's responsibility to give written notice to the Seller of any payment under proforma invoice arrangements
- 7.3 Sums paid after the due date shall pay interest until the day payment is received at the rate of 5% per annum above the base rate from time to time of National Westminster Bank Pic occurring from day to day from the date of delivery until the date of payment in full
- 7.4 If the recovery of sums outstanding from the Buyer is passed to a debt collection agency the Buyer shall pay the Seller's costs in instructing the said debt collection agency and all ancillary legal costs
- 7.5 Without prejudice to any other rights or remedies ofthe Seller any in default of the Buyer in making payment on the due date shall entitle the Seller to suspend deliveries under the Contract or any other Contract so long as the default continues and break the Contract as repudiated by the Buyer and determined if the Buyer has not within 14 days of receiving written notice from the Seller paid all sums due to the Seller.
8. Delivery
- 8.1 Delivery shall take place when the Goods are unloaded at or delivered to the Buyer's premises or other delivery location agreed between the Seller and the Buyer exceptthat if the Buyer collects or arranges collection of the Goods from the Seller's premises, or nominates a carrier for the Goods delivery shall take place when the Goods are loaded on the collection or carriers vehicle
- 8.2 Any dates quoted for delivery of the Goods are approximate only and the Seller will not be liable for any delay in delivery of the Goods however so caused. Time for delivery shall not be of the essence of the Contract unless previously agreed by the Seller in Writing. The Goods may be delivered by the Seller in advance of the quoted delivery date upon giving responsible notice to the Buyer
- 8.3 The Buyer shall accept immediate delivery or arrange to collect the Goods or arrange suitable storage, failing which the company may either:
- 8.3.1 effect delivery by whatever means they think most appropriate; or
- 8.3.2 arrange storage atthe Buyer's risk and expense pending delivery; or
- 8.3.3 re-sell or otherwise dispose ofthe Goods without prejudice to any other rights the Seller may have against the Buyer for breach of Contract or otherwise
- 8.4 Where the agreement provides for delivery by instalments each delivery shall constitute a separate Contract and failure by the Seller to deliver any one or more of the instalments in accordance with these Conditions or any claim by the Buyer in respect of any one or more instalments shall not entitle the Buyer to treat the Contract as a whole as repudiated
- 8.5 The Buyershall not be entitled to reject the Goods by reason only of short delivery

- 8.6 The quantity of the Goods delivered under the Contract shall be recorded by the Seller upon dispatch from the Seller's factory or warehouse and the Seller's records shall be accepted by the Buyer as conclusive evidence of the quantity delivered.
- 8.7 It is the Buyer's responsibility to notify the seller if Goods have not been received by the Buyer within seven days of the date of receipt of the Seller's invoice, therefore, if no notification is made the Buyer shall be deemed to have received the Goods.
- 8.8 If the Seller fails to deliver the Goods (or any instalment) for any reason other than any cause beyond the Seller's reasonable control or the Buyer's fault, and the Seller is accordingly liable to the Buyer, the Seller's liability shall be limited to the excess (if any) of the cost to the Buyer (in the cheapest available market) of similar Goods to replace those not delivered over the price of the Goods. The seller is under no obligation or liability in respect of failure to complete or delay or failure to deliver the goods comprised in any order or contract caused directly or indirectly by act of war or terrorism, strikes, lockouts, labour troubles, breakdowns, delays in transport, accidents, delay in obtaining material, fire, government prohibition, delivery of necessary fuel requirements, any and all problems or other restrictions relating to design or other manufacturing difficulties that arise during an order.
- 8.9 If the Buyer fails to take delivery of the Goods or fails to give the Seller adequate delivery instructions at the time stated for delivery (otherwise than by reason of any cause beyond the Buyer's reasonable control or by reason of the Seller's fault) then, with out prejudice to any other right or remedy available to the Seller, the Seller may:
- 8.9.1 store the Goods until actual delivery and charge the Buyer for the reasonable costs (including insurance) of storage;
or
- 8.9.2 sell the Goods at the best price readily obtainable and (after deducting all reasonable storage and selling expenses) account to the Buyer for the excess over the price under the Contract or charge the Buyer for any shortfall below the price under the Contract
9. Examinations and claims
- 9.1 The Buyer shall upon delivery examine the Goods and shall promptly (but in any event within seven working days of delivery) notify in Writing the Seller and the carrier, where relevant, of any apparent damage defect or shortage.
- 9.2 The Buyer shall comply with the carriers rules, regulations and requirements so as, when appropriate, to the Seller to make a claim against the carrier in respect of any damage or loss in transit.
- 9.3 Claims in respect of damage defects or shortage not apparent on examination and under clause 9.1 must be notified in Writing to the Seller within 7 days of the date of delivery
- 9.4 Notification under clauses 9.1 to 9.3 above shall be first made by telephone then by notice in Writing delivered by facsimile transmission or by first class recorded delivery mail and addressed to Abssac Limited Units 19/20 Bond Industrial Estate Wickhamford Evesham Worcs WR11 7RH.
- 9.5 In default of such notification the seller shall be deemed conclusively to have properly preformed its obligations under the Contract.
10. Property and risk
- 10.1 All risk including that of dam age to or loss of the Goods shall pass to the Buyer:
- 10.1.1 at the time when the Seller notifies the Buyer that the Goods are available for collection the case of Goods to be supplied at the Seller's premises
or
- 10.1.2 at the time of delivery but prior to unloading or if the Buyer wrongfully fails to take delivery of the Goods at the time when the Seller has tendered to delivery of the Goods in the case of Goods to be supplied otherwise than at the Seller's premises
or;
- 10.1.3 at the time of delivery of the Goods to a carrier for delivery to the Buyer in the case of Goods to be supplied in a manner otherwise than as set out in Conditions 10.1.1 or 10.1.2 above
- 10.2 The Buyer shall fully insure the Goods against all risks from the times stipulated for the passing of risk in condition 10.1 above up to the time when the proprietary rights in such Goods pass to the Buyer
- 10.3 Property (both legal and beneficial) in the Goods shall remain in the company until all sums owing to the Seller whether under the Contract or any other Contract at any time between the Seller and the Buyer made prior to the date of the Contract ("the Indebtedness) shall have been paid in full, until such time the Buyer shall hold the Goods as bailee for the Seller
- 10.4 The Buyer shall not be entitled to pledge or in any way charge by way of security for any indebtedness any of the Goods which remain the property of the Seller, but if the Buyer does so all moneys owing by the Buyer to the Seller shall (without prejudice to any other right or remedy of the Seller) forthwith become due and payable
- 10.5 The Buyer until otherwise notified by the Seller or on the happening of any of the event specified in Condition 10.7 ("the Events") may in the ordinary course of business sell the Goods and pass property in them ("the Re-Sale") subject to the stipulations ("the Stipulations") imposed in Condition 1 0.5
- 10.6 The Stipulations are that until the Indebtedness has been fully discharged;
- 10.6.1 the Goods shall not be converted into any other product or mixed with any other Goods to make another product ("the New Product") nor will the Buyer sell the New Product and property in it ("the Sale") but if the Buyer in breach of the above provision does convert or mix the Goods property in the New Product shall at the earliest moment that such vesting is possible, vest and remain in the Seller whether or not property in the Goods is at the moment extinguished
- 10.6.2 the Re-Sale shall be for the account of the Seller and, unless the Seller by written notice requires the payment to it of the proceeds of the Re-Sale ("the Proceeds") to the extent of the Indebtedness, in which case the Buyer shall forthwith on receipt of such notice or as soon as thereafter as it shall receive the Proceeds makes its payment, the Buyer shall retain the Proceeds in a separate bank account to the order of the Seller and not mix them with any other monies
- 10.6.3 in the event of a breach by the Buyer of its obligations under additions 10.6.1 the Seller shall have the right to trace the Proceeds in to any other moneys which may have been mixed and the Buyer shall indemnify the Seller on a full indemnity basis against loss, damage, costs or expenses incurred in such tracing
- 10.6.4 until the Re-Sale the Seller has have the right to repossess the Goods or take possession of the New Product at any time and for this purpose shall have the right to enter on to any premises or land in the ownership or possession of the Buyer and remove the Goods and/or the New Product notwithstanding that they are affixed to such premises or land and the Buyer shall indemnify the Seller on a full indemnity basis against all loss, damage, costs or expenses so arising including loss, damage, costs or expenses in respect of third party claims. Such taking of possession re delivery shall be without prejudice in the obligation of the Buyer to purchase Goods
- 10.6.5 the Goods and the New Product shall until their Re-Sale or Sale be stored separately, protected and insured and identified and clearly marked as the Seller's property
- 10.7 The Events are;
- 10.7.1 The giving of any notice to the Buyer that a receiver, manager, administrative receiver, supervisor, nominee or administrator is to be or has been appointed over any of the property or assets of the Buyer or that a petition to wind up the Buyer is to be or has been presented or that an application for an administration order is to be or has been made or any notice of a resolution to wind up the Buyer (say for the purposes of bona fide reconstruction or amalgamation)
- 10.7.2 A decision by the Buyer that the Buyer intends to make any arrangement or composition with its creditors generally.
- 10.7.3 Where the Buyer pursuant to section 123 or 268 of the Insolvency Act 1986 appears to be unable to pay a debt or appears to have no reasonable prospects of being able to pay a debt

- 10.7.4 any distress or execution levied as threatened to be levied on any property or assets of the Buyer
- 10.7.5 the inability of the Buyer to pay its debts as they fall due
- 10.7.6 on receipt of notification from the company under Condition 10.5 or on the happening of any of the Events the Buyer shall immediately deliver the Goods and the New Product property in which the Product is reserved to or is vested in the Seller to such address as the Seller shall specify in default of which or in the alternative, the Seller shall have the right to enter on any premises or land in the ownership or possession of the Buyer in order to recover the Goods and the New Product and the Buyer shall indemnify the Seller on a full indemnity basis against all loss, damage, costs or expenses as arising including loss, damage, cost or expenses in respect of third party claims
11. Breach by or insolvency by the Buyer
- 11.1 if the Buyer shall not comply with any of its obligations to the Seller or upon the occurrence of any of the Events referred to in clause 10.7 the Seller shall have the right forthwith to terminate the Contract but without affecting any other claim right or remedy of the Seller against the Buyer and without any liability to the Buyer, and if the Goods have been delivered but not paid for the price shall become immediately due and payable notwithstanding any previous agreement or arrangement to the contrary
12. Export Terms
- 12.1 In these Conditions "Incoterms" mean the international rules for the interpretation of trade terms of the International Chambers of Commerce as in force at the date when the Contract is made. Unless the Context otherwise requires, any term or expression which is defined in or given a particular meaning by the provisions Incoterms shall have the same meaning in these Conditions, but if there is any conflict between the provisions of Incoterms and these Conditions, the latter shall prevail
- 12.2 Where the Goods are supplied for export from the United Kingdom, the provisions of this clause 12 shall (subject to any special terms agreed in Writing between the Buyer and the Seller) apply notwithstanding any other provision of these Conditions
- 12.3 The Buyer shall be responsible for complying with any legislation or regulations governing the importation of the Goods in to the country or destination and for the payment of any duties on them
- 12.4 Unless otherwise agreed in Writing between the Buyer and the Seller, the Goods shall be delivered fob the air or sea port of shipment and the Sellers shall be under no obligation to give notice under section 32(3) of the Sale Of Goods Act 1979
- 12.5 The Buyer shall be responsible for arranging for testing and inspection of the Goods at the Sellers premises before shipment. The Seller shall have no liability for any claim in respect of any defect in the Goods which would be apparent on inspection and which is made after shipment, or in respect of any damage during transit
- 12.6 Payment of all amounts due to the Seller shall be made by irrevocable letter of credit opened by the Buyer in favour of the Seller and confirmed by a bank acceptable by the Seller, or by telegraphic transfer in to the Sellers aforementioned bank account or if the Seller agrees in Writing on or before acceptance of the Buyer order to waive this requirement, by acceptance by the Buyer and delivery to the Seller of a bill of exchange drawn on the Buyer payable 60 days after sight of the order to the Seller at such branch of National Westminster Bank in England as may be specified in the bill of exchange
- 12.7 Unless otherwise specifically agreed between the Seller and the Buyer all Exports sales shall be made by delivery to the Buyer's premises and the Seller's prices shall be increased to cover the Seller's costs in making such deliveries
- 12.8 The Buyer warrants that if an import licence or permit is required for the importation of the Goods into the county or destination then such import licence or permit has been obtained or would be obtain prior to shipment
13. Cancellation, suspension and termination
- 13.1 If the Buyer shall purport to cancel the whole or any part of the Contract the Seller may by notice in Writing to the Buyer elect to treat the Contract as repudiated and the Buyers shall thereupon be liable to pay the Seller by way of liquidated damages a sum equal to all the expenses incurred by the Seller in connection with the Contract including an appropriate amount in respect of administration overheads, costs and loss of profit. The Sellers reasonable estimate of the expenses incurred shall be final and binding on the parties
- 13.2 If for any cause whatsoever beyond its control the Seller is unable to make any delivery on the applicable delivery date or preform any of its obligations under the Contract the Seller may be notice in Writing to the Seller terminate the Contract or suspend the Contract without liability of any loss or damage thereby occurred by the Buyer
14. Intellectual property
- 14.1 The Buyer shall not infringe any patent, trade name, registered design, copyright industrial or other intellectual property right belonging to the Seller in relation to the Goods or any other goods or matters supplied by the Seller with or in relation to the Goods
- 14.2 The Buyer shall promptly report to the Seller particulars of any use by any person of a patent, trade name, registered design, trade mark or get up of Goods which might amount to infringement of any patent, trade mark, registered design, copy right, industrial or other intellectual property right attaching to the Goods or to unfair competition on passing off
- 14.3 In the event that it comes to the notice of the Buyer that any person alleges that a patent, trade name, registered design, copy right, industrial or other intellectual property right is invalid or that they infringe any rights of that person or that they are open to any form of attack the Buyer shall not make any omissions but shall promptly report the matter to the Seller
- 14.4 The Seller shall have conduct of all proceedings relating to any patent, trade name, registered design, copy right, industrial or other intellectual property right attaching to the Goods
15. Force majeure
- 15.1 In so far as the performance of the Contract by the Seller may be affected by any strike, any lack of available, shipping or transport or materials, any restriction regulation or decree by any local or municipal authority or government department or by any cause beyond the Seller's reasonable control (which shall be construed without reference to the proceeding causes) the Seller may elect at its absolute discretion either;
- 15.1.1 to terminate the Contract or;
- 15.1.2 to proceed to preform or continue performance under the Contract within a reasonable time after the termination of such events of circumstance
- 15.2 In the event that the Seller makes an election under clause 15.1 the Buyer shall accept the Goods or such part of them as are delivered to it notwithstanding any delay
16. Exclusion of Contract (rights of the third party) Act 1999
- 16.1 Nothing in these Conditions will confer on any third party any benefit or the right to enforce any terms of these Conditions
17. Proper law
- 17.1 The Contract is and shall be deemed to be made in England and shall in all respects be governed by English Law and shall be subject to the non-exclusive jurisdiction of the English Court General
18. General
- 18.1 Any notice required or permitted to be given by either party to the other under these Conditions shall be in Writing and addressed to that other party at its registered office or principal place of business or such other address as may at the relevant time having been notified pursuant to this provision to the party giving the notice

- 18.2 No waiver by the Seller of any breach of the Contract by the Buyer shall be considered as a waiver of any subsequent breach of the same or any other provision
- 18.3 If any provision of these Conditions is held by any competent authority to be invalided or unenforceable in whole or in part the validity of the other provisions of these Conditions and the remainder of the provision in question shall not be affected
- 18.4 No liability, warranty or any other claim can or will exist for any product(s) during or as a consequence of or any consequence whatsoever resulting directly or indirectly from or in connection with any of the following regardless of any other contributory cause or event from :
Terrorism Terrorism is defined as any act or acts including and not limited to the use or threat of force/violence/harm or damage to life or property or the threat of such harm or damage including harm or damage by nuclear and or chemical and or biological and or radiological means. Caused or occasioned by any persons or groups or so claimed in whole or in part for political religious ideological or similar purposes. Or, any action taken in controlling preventing suppressing or in anyway relating to the above.
War War or invasion, act of foreign enemy hostilities of a warlike operation or operations (whether war be declared or not) civil war rebellion revolution insurrection civil commotion assuming the proportions of or amounting to an uprising military or usurped power. Or any action taken in controlling preventing suppressing or in any way relating to any of the above.
- 18.5 Any dispute arising under or in connection with these Conditions or the sale of the Goods shall be referred to arbitration by a single arbitrator appointed by agreement or (in default) nominated on the application of either party by the president for the time being of the Law Society.
Absac Limited may make changes to the contents/ improvements and/or changes in the product(s) or service(s) described in this publication at any time.

August 2013.