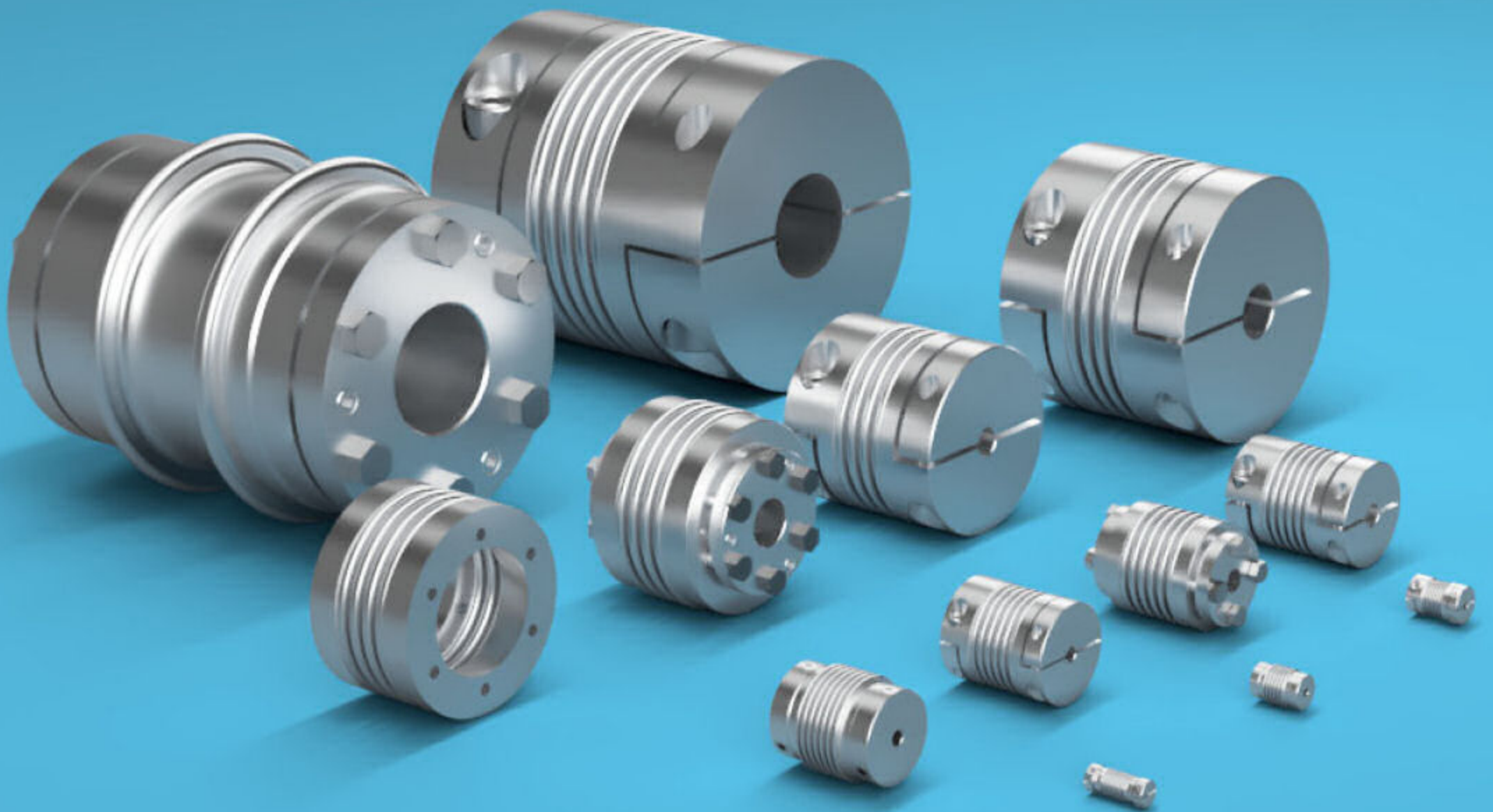


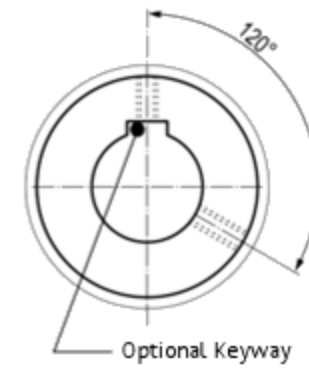
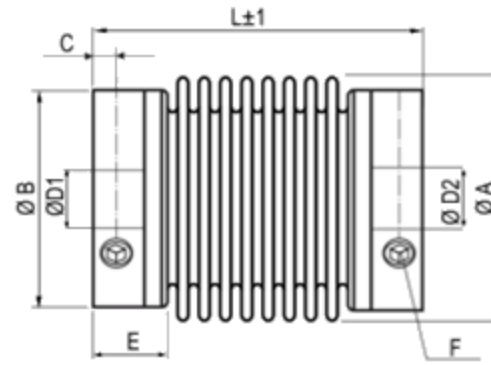
ABSSAC Bellow Shaft Couplings



ABSSAC

PRECISION MOTION SINCE 1982

KB1 Miniature metal bellow coupling



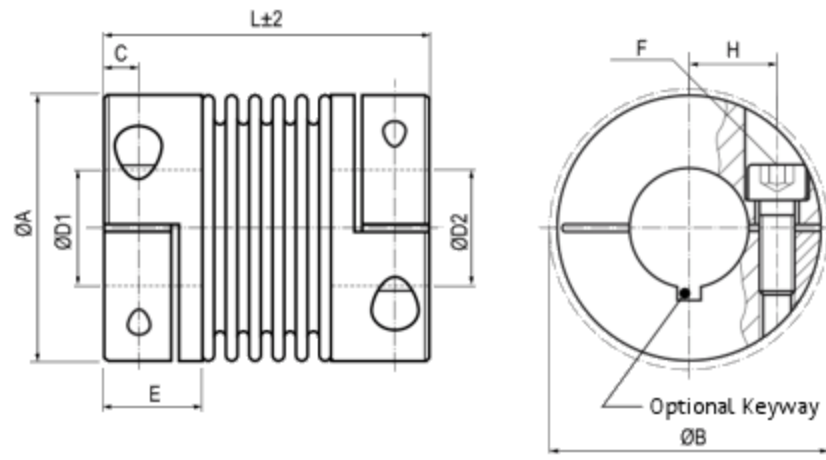
Size	Torque (Nm)	Dimensions (mm)							Technical Specification							
		L	A	D1/D2	B	C	E	F	Mass (g)	Moment of inertia g.m ²	Bellows stiffness			Offset		
		Length	Diameter	Bores	Diameter		Hub Length	Bolt Torque			Torsion Nm/rad (10 ³)	Radial N/mm	Axial N/mm	Radial mm	Axial mm	Angle Degrees
5	0.05	14	6.5	1-3	6.5	1.5	4	1 x M2 0.35	1	0.1	50	6	9	0.1	0.4	1
1	0.1	23	10	1-4	10	2	6	1 x M3 0.5	3	0.45	65	10	14	0.12	0.2	1.2
5	0.5	19	15	3-8	13.5	2	6	1 x M3 0.5	4	1.3	260	43	13	0.1	0.2	1
		4.5							1.5	200	18	10	0.15	0.3	1.5	
		5							1.6	160	9	8	0.2	0.4	2	
10	1	21	15	3-8	13.5	2	6	1 x M3 0.5	5.5	1.8	510	74	27	0.1	0.2	1
		6							2	380	31	20	0.15	0.3	1.5	
		7							2.3	310	16	16	0.2	0.4	2	
15	1.5	26	19	3-12	19	3	8	2 x M4	10	6	750	59	15	0.1	0.3	1.5
		30		8#				1.5	12	7.4	700	20	9	0.15	0.4	2
20	2	22	24	3-14	21.5	3	6	2 x M4	11	9.2	1500	67	12	0.15	0.3	1.5
		28		10#				1.5	13	12.6	1300	21	11	0.2	0.4	1.5
		32		1.5				15	13.5	1050	11	9	0.25	0.5	2	
45	4.5	40	32	6-19	29	4	12	2 x M6	44	68	6500	168	32	0.1	0.3	1.5
		48		13#				3	50	79	4200	41	20	0.2	0.5	2
100	10	45	40	6-24	36	4	12	2 x M6	60	150	8100	120	27	0.15	0.4	1.5
		55		17#				3	79	210	6800	29	17	0.3	0.6	2

Standard Product Order Number: **KB1 / 45 - 40 - 10 - 18**

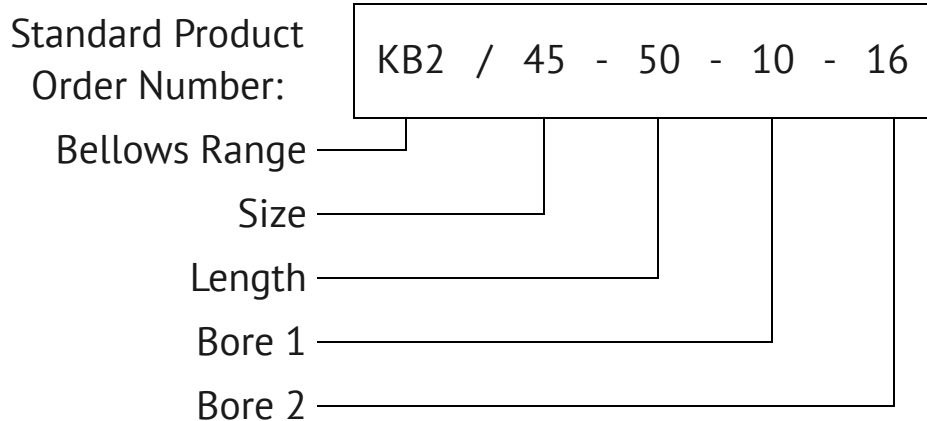
Bellows Range ————
 Size ————
 Length ————
 Bore 1 ————
 Bore 2 ————

Rotational Speed: Max 15000 Min²
 Material: Bellows - Stainless Steel
 Size 05 - Bronze
 Hub - Aluminium
 Hub: Tolerance H7
 Temperature: -30°C ~ 120°C
 Keyway: optional Keyways to DIN 6885
 Largest Possible bore marked with #

KB2 Miniature metal bellow coupling

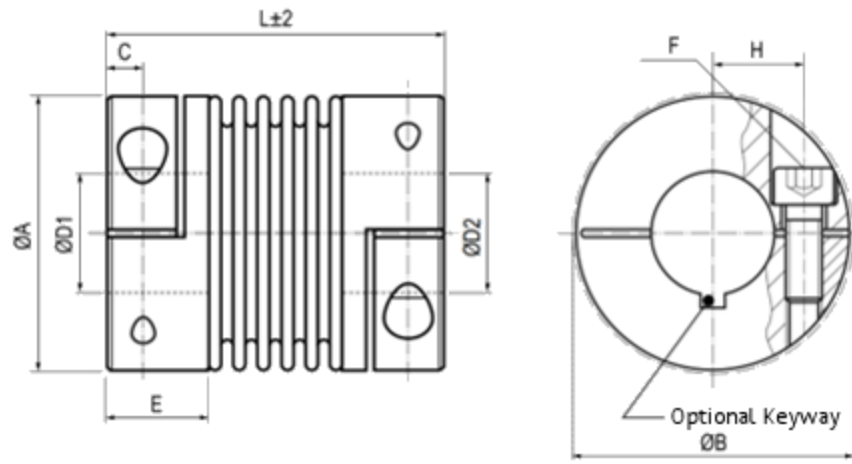


Size	Torque (Nm)	Dimensions (mm)								Technical Specification							
		L	A	D1/D2	H	C	ØB	E	F	Mass (g)	Moment of inertia g.m ²	Bellows stiffness			Offset		
		Length	Diameter	Bores				Hub Length	Bolt Torque			Torsion Nm/rad (10 ³)	Radial N/mm	Axial N/mm	Radial mm	Axial mm	Angle Degrees
1	0.1	23	10	1-4	3.4	2	11	7	M1.6	3	0.5	65	10	14	0.12	0.2	1.2
									0.1								
5	0.5	21	15.5	3-8	5.2	2.5	17.5	7	M2	7.5	2.7	260	43	13	0.1	0.2	1
		25		8#					0.43	7.8	2.8	200	18	10	0.15	0.3	1.5
		28								8.2	3	160	9	8	0.2	0.4	2
10	1	23	15.5	3-10	5.2	2.5	17.5	7	M2	9	3.1	510	74	27	0.1	0.2	1
		26		10#					0.43	9.3	3.4	380	31	20	0.15	0.3	1.5
		31								10	3.7	310	16	16	0.2	0.4	2
15	1.5	26	20	3-10	7	3	21	8.5	M2.5	13	8	750	59	15	0.1	0.3	1.5
		31		10#					0.85	15	9.3	700	20	9	0.15	0.4	2
20	2	32	25	3-14	9	3.5	27	11	M3	29	24	1500	67	12	0.15	0.3	1.5
		38		14#					2	32	27	1300	21	11	0.2	0.4	1.5
		42								33	29	1050	11	9	0.25	0.5	2
45	4.5	41	32.5	6-18	12	5	34	13	M4	61	100	6500	168	32	0.1	0.3	1.5
		50		18#					3.5	67	112	4200	41	20	0.2	0.5	2
100	10	47	40.5	6-25	15.5	5	41.5	13.5	M4	86	233	8100	120	27	0.15	0.4	1.5
		57		25#					4.5	106	290	6800	29	17	0.3	0.6	2



Rotational Speed:	Max 15000 Min ²
Material:	Bellows - Stainless Steel Hub - Aluminium
Hub:	Tolerance H7
Temperature:	-30°C ~ 120°C
Keyway:	optional Keyways to DIN 6885
Largest Possible bore marked with #	

KB4 Metal bellow coupling



Size	Torque (Nm)	Dimensions (mm)								Technical Specification								
		L	A	D1/D2	H	C	ØB	E	F	Mass (g)	Moment of inertia g.m ²	Bellows stiffness			Offset			Max rotational speed rpm
		Length	Diameter	Bores				Hub Length	Bolt Torque			Torsion Nm/rad (10 ³)	Radial N/mm	Axial N/mm	Radial mm	Axial mm	Angle Degrees	
18	18	63	45	10-25.4	17	5.5	47.4	19.5	M5	0.1	0.04	20	205	50	0.2	0.5	1.5	12800
		71							8	0.15	0.05	15	82	36	0.25	0.5	2	
30	30	65	56	10-32	20	7.5	56.4	24.5	M6	0.3	0.15	38	720	50	0.15	0.6	1.5	10300
		73		30#					15	0.32	0.16	28	225	28	0.25	1	2	
60	60	79	66	12-35	23	10	66	29	M8	0.5	0.33	75	1150	90	0.15	0.6	1.5	8700
		89							40	0.6	0.36	50	340	50	0.25	1	2	
80	80	91	82	14-44	28	11	82.9	33.5	M10	2.3	2.3	128	1200	80	0.2	0.5	1.5	6900
		102							84	2.4	2.4	75	400	50	0.25	0.8	2	
150	150	91	82	19-44	28	11	82.9	33.5	M10	2.3	2.5	155	2020	145	0.2	0.5	1.5	6900
		102							84	2.4	2.6	105	595	85	0.25	0.8	2	
200	200	101	90	22-47	31	13	90.8	38	M12	2.6	3.3	175	2500	145	0.2	0.5	1.5	6400
		113							125	2.7	3.5	120	460	82	0.25	0.8	2	
300	300	105	110	30-60	40	13	110	38	M12	4.3	7.6	502	6300	280	0.2	0.5	1.5	6000
		116							145	4.4	7.8	285	1400	145	0.25	0.8	2	
500	500	112	122	35-70	42	15	122	42	M12	5.5	13.5	690	7790	100	0.2	0.5	1.5	5000
		123							145	5.6	13.7	320	970	85	0.25	1	2	
800	800	168	157	40-80	55	22.5	170.3	55	2xM20	14.3	56.9	1270	700	275	0.2	0.8	1.8	5000
									400									
1400	1400	168	157	50-80	55	22.5	170.3	55	2xM20	14.8	57.7	1270	700	275	0.2	0.8	1.8	5000
									470									

Standard Product Order Number:

KB4 / 60 - 89 - 12 - 32

Bellows Range

Size

Length

Bore 1

Bore 2

Material:

Bellows - Stainless Steel

Hub - Aluminium

Size 80 - Steel

Hub:

Tolerance H7

Temperature:

-30°C ~ 120°C

Size 800/1400:

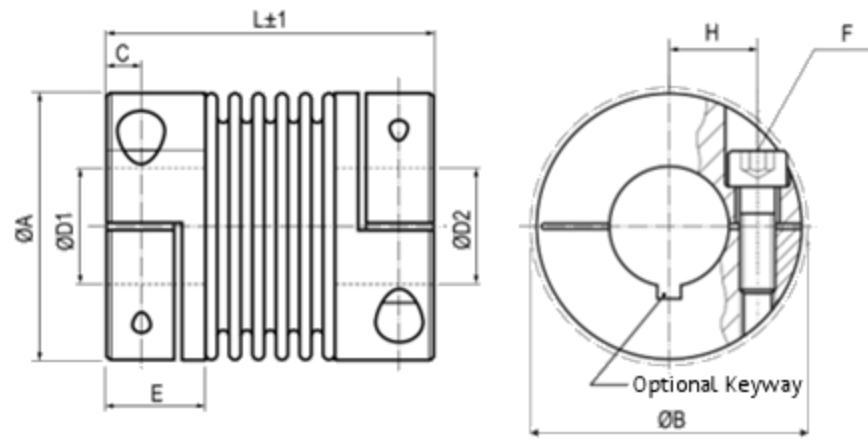
-30°C ~ 250°C

Keyway:

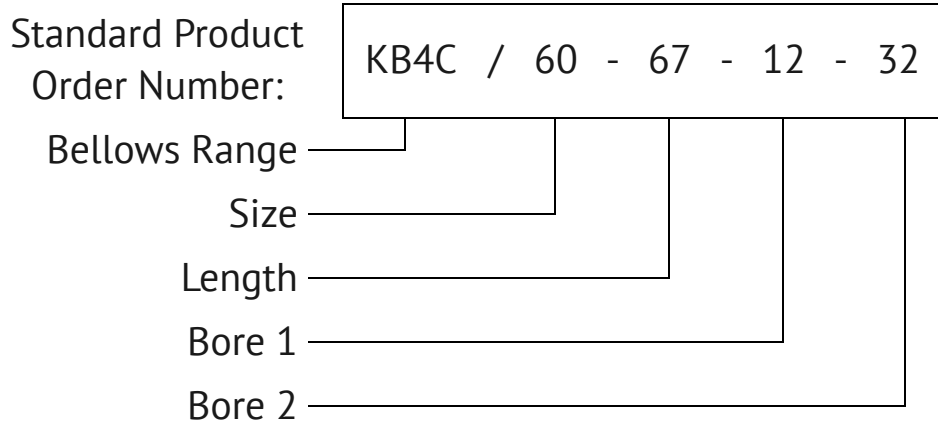
optional Keyways to DIN 6885

Largest Possible bore marked with #

KB4C Metal bellow coupling

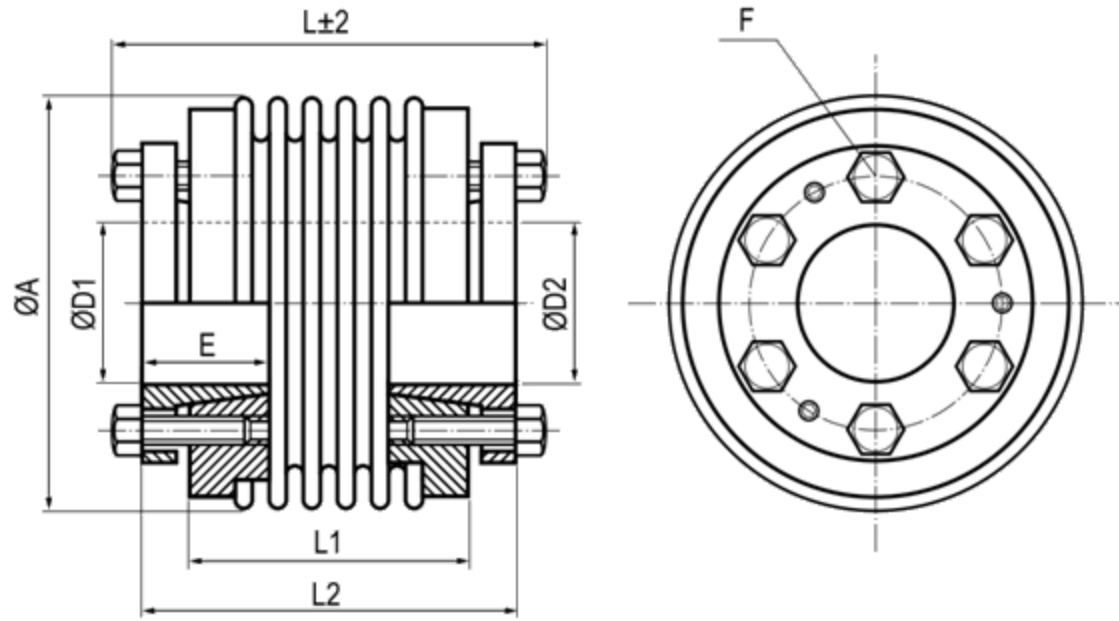


Size	Torque (Nm)	Dimensions (mm)								Technical Specification								
		L	A	D1/D2	H	C	ØB	E	F	Mass (g)	Moment of inertia g.m ²	Bellows stiffness			Offset			Max rotational speed rpm
		Length	Diameter	Bores				Hub Length	Bolt Torque			Torsion Nm/rad (10 ³)	Radial N/mm	Axial N/mm	Radial mm	Axial mm	Angle Degrees	
18	18	58	45	10-25.4	17	5.5	47.4	17.5	M5	0.07	0.03	20	205	50	0.2	0.5	1.5	12800
		8							0.12	0.04	15	82	36	0.25	0.5	2		
30	30	58	56	10-32	20	7.3	56.4	21	M6	0.26	0.13	38	720	50	0.15	0.6	1.5	10300
		15		0.27					0.14	28	225	28	0.25	1	2			
60	60	67	66	12-35	24	8.6	66.2	24	M8	0.38	0.28	75	1150	90	0.15	0.8	1.5	8700
		40							0.42	0.31	50	340	50	0.25	1	2		
80	80	78	82	12-44	28	9.8	82.9	27	M10	0.7	0.78	128	1200	80	0.22	0.5	1.5	6900
		84							0.76	0.85	75	400	50	0.25	0.8	2		
150	150	78	82	14-44	28	9.8	82.9	27	M10	0.73	0.82	155	2020	145	0.2	0.5	1.5	6900
		84							0.8	0.89	105	595	85	0.25	0.8	2		
200	200	83	90	16-47	31	10.8	90.8	29	M12	0.89	1.19	175	2500	145	0.2	0.5	1.5	6400
		125							0.95	1.27	120	460	82	0.25	0.8	2		
300	300	94	110	20-60	40	11.8	110	32.5	M12	1.37	0.74	502	6300	280	0.2	0.5	1.5	6000
		145							1.43	2.86	285	1400	145	0.25	0.8	2		
500	500	100	122	25-70	42	13.3	122	36	M12	1.81	4.45	690	2290	100	0.2	0.5	1.5	5000
		145							1.91	4.69	320	970	85	0.25	1	2		



Material:	Bellows - Stainless Steel Hub - Aluminium
Hub:	Tolerance H7
Temperature:	-30°C ~ 120°C
Keyway:	optional Keyways to DIN 6885
Largest Possible bore marked with #	

KB5 Metal bellow coupling



Size	Torque (Nm)	Dimensions (mm)							Technical Specification								
		L	A	D1/D2	E	L1	L2	F	Mass (g)	Moment of inertia g.m ²	Bellows stiffness			Offset			Max rotational speed rpm
		Length	Diameter	Bores	Hub Length			Bolt Torque			Torsion Nm/rad (10 ³)	Radial N/mm	Axial N/mm	Radial mm	Axial mm	Angle Degrees	
18	18	63	45	10-18	20	38	56	4xM5	0.36	0.075	20	205	50	0.2	0.5	1.5	11500
		71				46	64	4.5	0.37	0.078	15	82	36	0.25	0.5	2	
30	30	53	56	12-20	20	30	46	6xM5	0.4	0.11	38	720	50	0.15	0.6	1.5	11000
		61				38	54	4.5	0.42	0.12	28	225	25	0.25	1	2	
60	60	62	66	15-25	25	36	54	6xM6	0.77	0.32	75	1150	90	0.15	0.6	1.5	9100
		73				47	65	8.5	0.79	0.34	50	340	50	0.25	1	2	
80	80	78	82	20-35	30	50	70	6xM6	1.34	1.05	128	1200	80	0.2	0.5	1.5	7000
		90				62	82	10	1.39	1.11	75	400	50	0.25	0.8	2	
150	150	78	82	20-35	30	50	70	6xM6	1.36	1.15	155	2020	145	0.2	0.5	1.5	7000
		90				62	82	15	1.41	1.21	105	595	85	0.25	0.8	2	
200	200	78	90	20-40	30	50	70	6xM6	1.59	1.39	175	2500	145	0.2	0.5	1.5	6700
		91				63	83	15	1.66	1.49	120	460	82	0.25	1	2	
300	300	90	110	25-50	37	56	80	6xM8	3.2	4.66	502	6300	280	0.2	0.5	1.5	5200
		102				67	91	17	3.32	4.81	285	1400	145	0.25	1	2	
500	500	101	122	35-55	40	66	90	6xM8	3.78	6.11	690	7790	100	0.2	0.5	1.5	4600
		112				77	101	25	3.87	6.38	320	970	85	0.25	1	2	
800	800	170	157	50-70	60	110	150	6xM16 45	9.05	24.05	760	500	185	0.2	0.8	1.8	3700
1400	1400	170	157	50-70	60	110	150	6xM16 80	9.15	24.2	1270	700	275	0.2	0.8	1.8	3700
3000	3000	206	157	55-85	60	150	190	6xM12 85	9.43	25.7	2810	29450	1300	0.2	0.8	1.5	2800
5000	5000	206	208	60-90	80	146	186	6xM16 210	19.9	96.7	4810	4915	505	0.2	0.8	1.5	2800

Standard Product Order Number:

KB5 / 60 - 73 - 20 - 25

Bellows Range

Size

Length

Bore 1

Bore 2

Material:

Bellows - Stainless Steel
Hub - Steel

Hub:

Tolerance H7

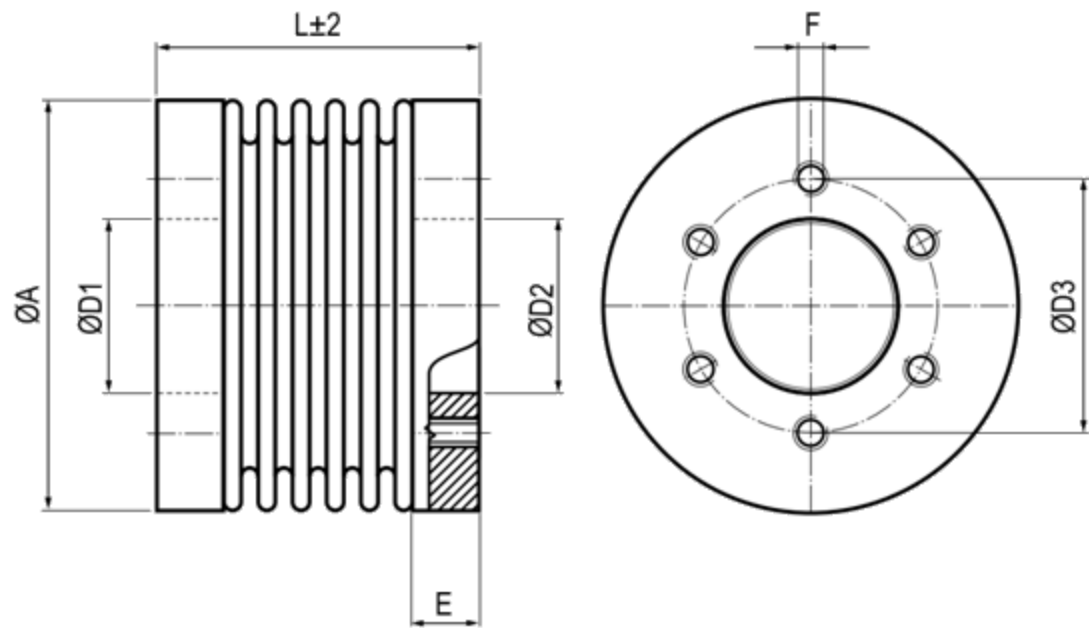
Temperature:

-30°C ~ 120°C

Size 800/1400:

-30°C ~ 250°C

KB7 Metal bellow coupling



Size	Torque (Nm)	Dimensions (mm)						Technical Specification								
		L	A	D1/D2	Ø D3	E	F	Mass (g)	Moment of inertia g.m ²	Bellows stiffness			Offset			Max rotational speed rpm
		Length	Diameter	Bores						Torsion Nm/rad (10 ³)	Radial N/mm	Axial N/mm	Radial mm	Axial mm	Angle Degrees	
18	18	36	45	22	31	6	M5	0.11	0.04	20	205	50	0.2	0.5	1.5	11500
		44						0.115	0.04	15	82	36	0.25	0.5	2	
30	30	30	56	28	37	7	M5	0.16	0.09	38	720	50	0.15	0.6	1.5	1100
		38						0.17	0.09	28	225	25	0.25		2	
60	60	41	66	38	46	10.5	M6	0.33	0.25	75	1150	90	0.15	0.6	1.5	9100
		51						0.37	0.29	50	340	50	0.25	1	2	
80	80	50	82	50	62	13	M6	0.69	0.83	128	1200	80	0.2	0.5	1.5	7000
		62						0.75	0.93	75	400	50	0.25	1	2	
150	150	50	82	50	62	13	M6	0.69	0.83	155	2020	145	0.3	0.5	1.5	7000
		62						0.75	0.92	105	595	85	0.25	1	2	
200	200	50	90	50	62	13	M6	0.69	1	175	2500	145	0.2	0.5	1.5	6700
		63						0.8	1.1	120	460	85	0.25	1	2	
300	300	55	110	65	80	13	M8	1.18	2.5	502	6300	280	0.2	0.5	1.5	5200
		66						1.24	2.7	285	1400	145	0.25	1	2	
500	500	61	122	70	94	16	M8	1.95	5	690	7790	100		0.5	1.5	4600
		72						2.05	5.3	320	970	85	0.2	1	2	
800	800	131	157	85	110	23	M16	3.55	15	760	500	185	0.25	0.8	1.8	3700
1400	1400	131	157	85	110	23	M16	3.55	15	1270	700	275	0.2	0.8	1.8	3700
3000	3000	131	157	85	110	23	M16	3.7	16	2810	2945	305	0.2	0.8	1.5	2800
5000	5000	146	208	100	130	36.5	M16	8.22	61	4810	4915	505	0.2	0.8	1.5	2800

Standard Product Order Number:

KB7 / 60 - 41 - 38

Bellows Range

Size

Length

Bore

Material:

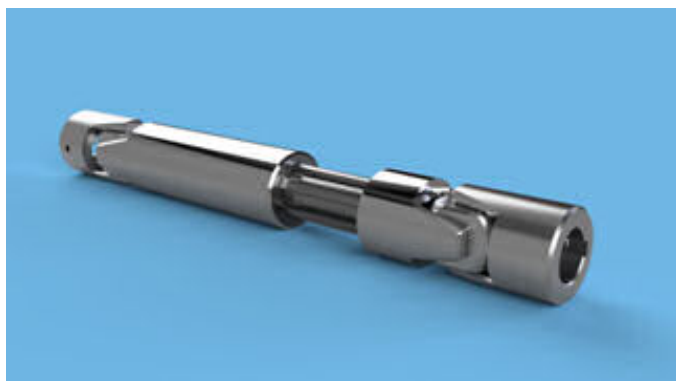
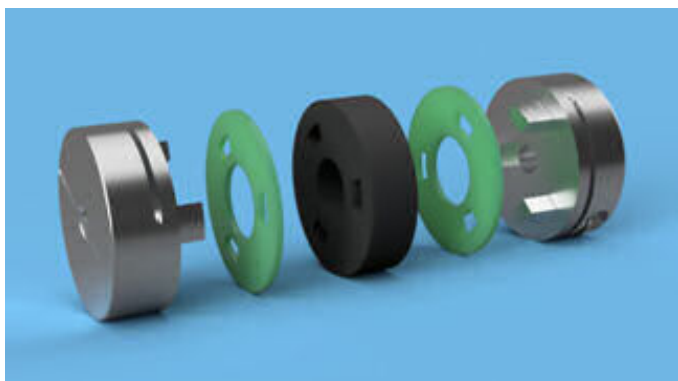
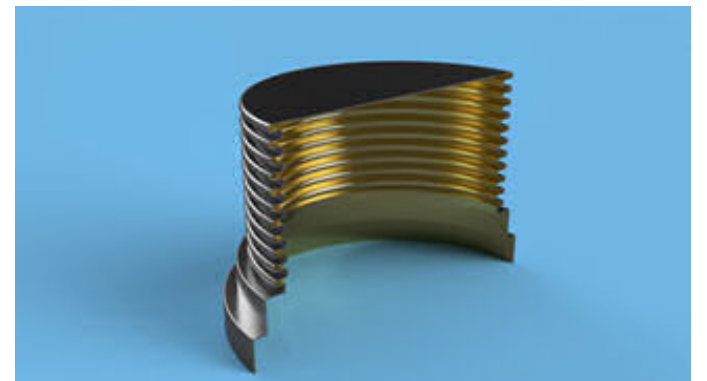
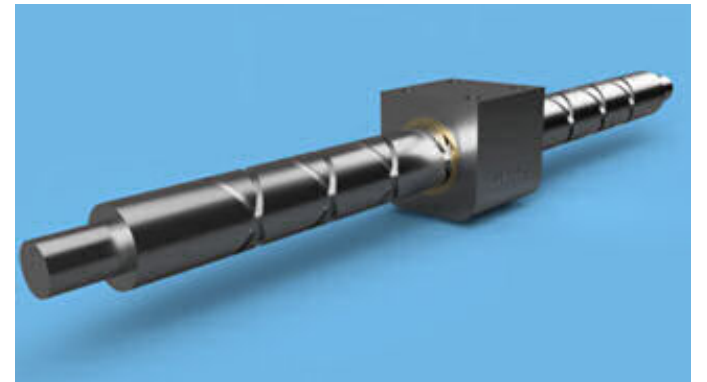
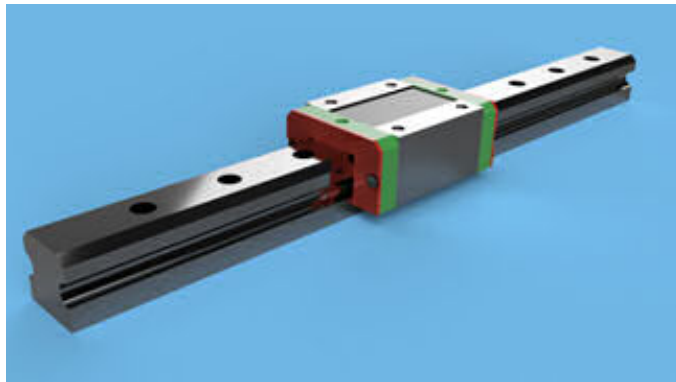
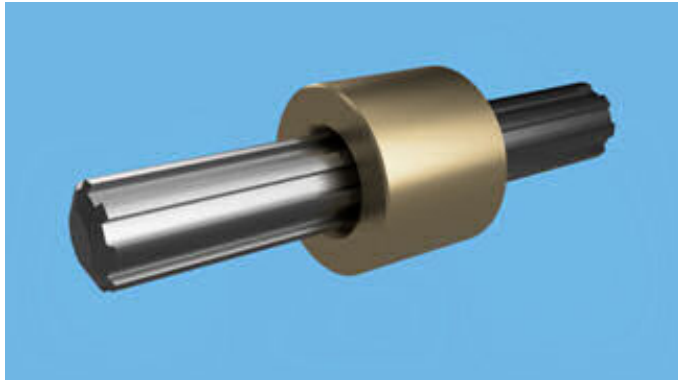
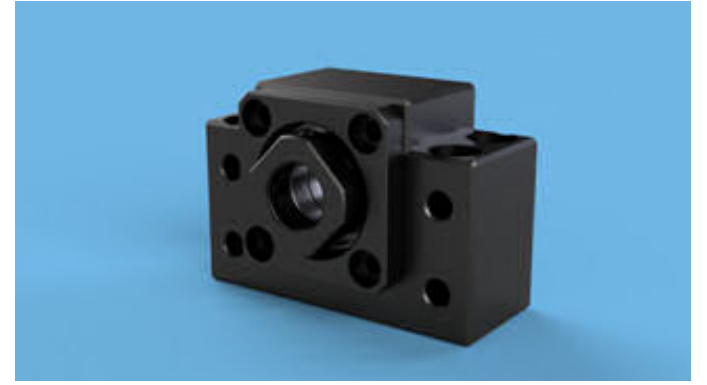
Bellows - Stainless Steel
Hub - Steel

Hub:

Tolerance H7

Temperature:

-30°C ~ 120°C



ABSSAC Ltd, E1A The Enterprise Centre, Enterprise Way, Evesham, Worcestershire. United Kingdom. WR11 1GS

Call: 01386 421 005

Email: sales@abssac.co.uk

Visit: www.abssac.co.uk



twitter.com/ABSSAC



uk.pinterest.com/abssac



instagram.com/abssac