

ABSSAC Rigid Shaft Couplings

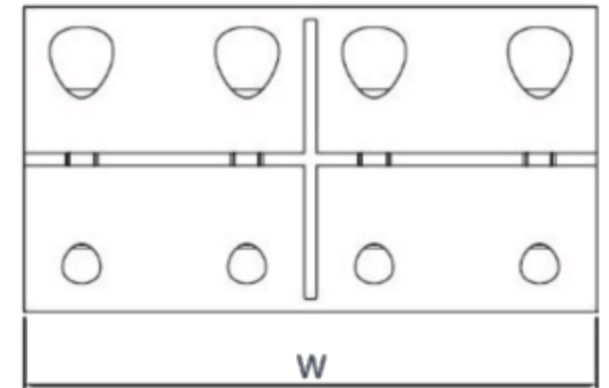
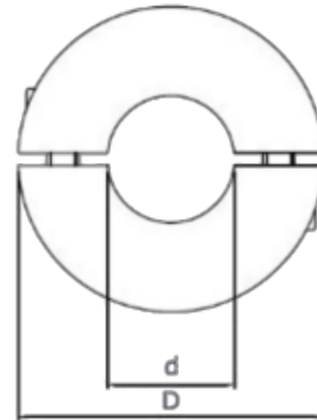
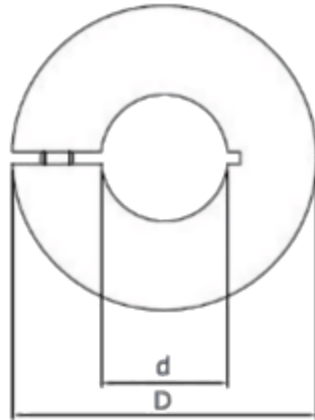


ABSSAC

PRECISION MOTION SINCE 1982

1 Piece Rigid Shaft Coupling

RIGID KBST2



Standard Part Numbers

RIGID KBST2 - 50

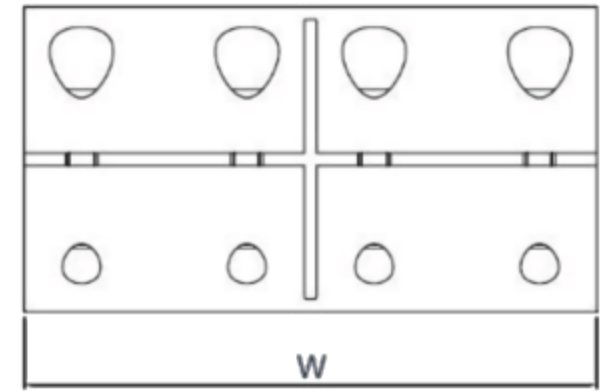
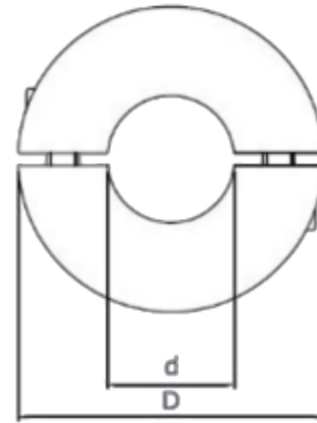
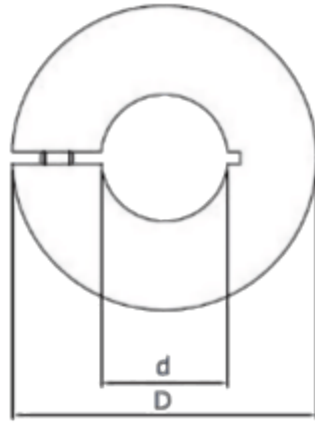
Different Bores Part Numbers

RIGID KBST2 - 50 - 45 - 48

Size	Standard Bore d H7 (mm)	Max. Torque (Nm)	Dimensions			Clamping Bolt (ISO4762)
			d	D	W	
KBST2-6	6	30	5-7	18	30	M3x8
KBST2-8	8	50	5-12	24	35	M3x10
KBST2-10	10	100	5-15	29	45	M4x12
KBST2-12	12	100	5-15	29	45	M4x12
KBST2-14	14	190	10-17	34	50	M5x16
KBST2-15	15	190	10-17	34	50	M5x16
KBST2-16	16	190	10-17	35	50	M5x16
KBST2-20	20	350	10-24	42	65	M6x16
KBST2-25	25	390	10-26	45	75	M6x16
KBST2-30	30	475	20-32	53	83	M6x18
KBST2-35	35	1100	20-40	67	95	M8x25
KBST2-40	40	1325	30-50	77	108	M8x25
KBST2-50	50	2250	40-52	85	124	M10x25
KBST2-55	55	3000	45-58	93	140	M10x30
KBST2-60	60	3300	50-64	100	150	M10x30
KBST2-65	65	4000	60-72	115	200	M12x35
KBST2-70	70	4800	65-78	122	220	M12x40
KBST2-75	75	5500	70-88	133	220	M12x40
KBST2-80	80	6800	75-92	138	220	M12x45
KBST2-85	85	7500	75-92	148	250	M16x45
KBST2-90	90	8400	80-100	157	280	M16x50
KBST2-95	95	10000	80-100	167	300	M20x55
KBST2-100	100	12500	80-104	173	320	M20x55

2 Piece Rigid Shaft Coupling

RIGID KBST2-G



Standard Part Numbers

RIGID KBST2 - G - 50

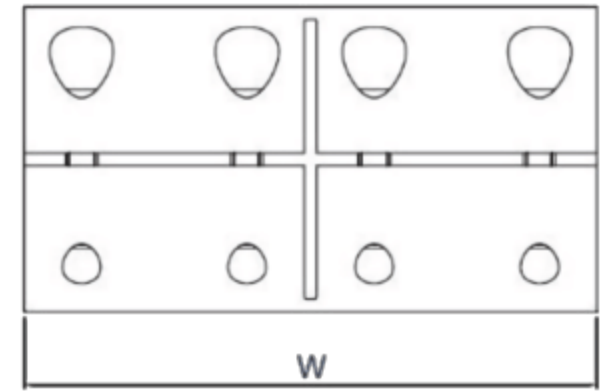
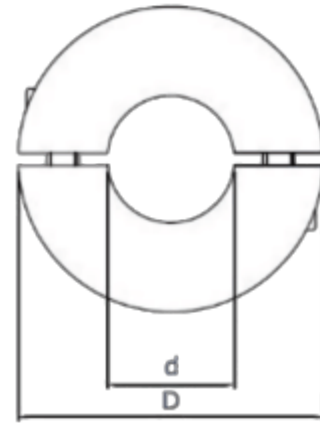
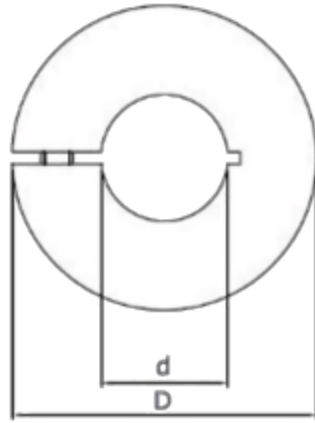
Different Bores Part Numbers

RIGID KBST2 - G - 50 - 45 - 48

Size	Standard Bore d H7 (mm)	Max. Torque (Nm)	Dimensions			Clamping Bolt (ISO4762)
			d	D	W	
KBST2-G-6	6	30	5-7	18	30	M3x8
KBST2-G-8	8	50	5-12	24	35	M3x10
KBST2-G-10	10	100	5-15	29	45	M4x12
KBST2-G-12	12	100	5-15	29	45	M4x12
KBST2-G-14	14	190	10-17	34	50	M5x16
KBST2-G-15	15	190	10-17	34	50	M5x16
KBST2-G-16	16	190	10-17	35	50	M5x16
KBST2-G-20	20	350	10-24	42	65	M6x16
KBST2-G-25	25	390	10-26	45	75	M6x16
KBST2-G-30	30	475	20-32	53	83	M6x18
KBST2-G-35	35	1100	20-40	67	95	M8x25
KBST2-G-40	40	1325	30-50	77	108	M8x25
KBST2-G-50	50	2250	40-52	85	124	M10x25
KBST2-G-55	55	3000	45-58	93	140	M10x30
KBST2-G-60	60	3300	50-64	100	150	M10x30
KBST2-G-65	65	4000	60-72	115	200	M12x35
KBST2-G-70	70	4800	65-78	122	220	M12x40
KBST2-G-75	75	5500	70-88	133	220	M12x40
KBST2-G-80	80	6800	75-92	138	220	M12x45
KBST2-G-85	85	7500	75-92	148	250	M16x45
KBST2-G-90	90	8400	80-100	157	280	M16x50
KBST2-G-95	95	10000	80-100	167	300	M20x55
KBST2-G-100	100	12500	80-104	173	320	M20x55

1 Piece Rigid Shaft Coupling Stainless

RIGID KBST2-VA



Standard Part Numbers

RIGID KBST2 - VA - 50

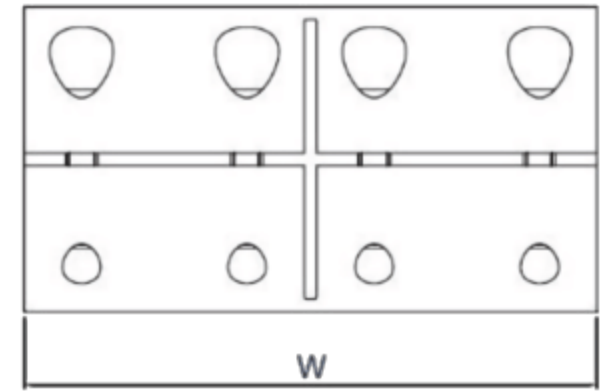
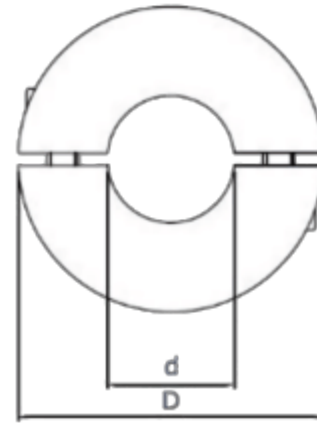
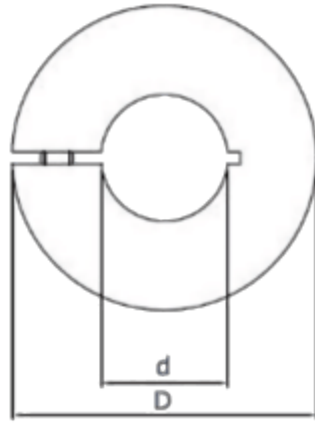
Different Bores Part Numbers

RIGID KBST2 - VA - 50 - 45 - 48

Size	Standard Bore d H7 (mm)	Max. Torque (Nm)	Dimensions			Clamping Bolt (ISO4762)
			d	D	W	
KBST2-VA-6	6	25	5-7	18	30	M3x8
KBST2-VA-8	8	40	5-12	24	35	M3x10
KBST2-VA-10	10	90	5-15	29	45	M4x12
KBST2-VA-12	12	90	5-15	29	45	M4x12
KBST2-VA-14	14	160	10-17	34	50	M5x16
KBST2-VA-15	15	160	10-17	34	50	M5x16
KBST2-VA-16	16	160	10-17	35	50	M5x16
KBST2-VA-20	20	300	10-24	42	65	M6x16
KBST2-VA-25	25	325	10-26	45	75	M6x16
KBST2-VA-30	30	400	20-32	53	83	M6x18
KBST2-VA-35	35	925	20-40	67	95	M8x25
KBST2-VA-40	40	1100	30-50	77	108	M8x25
KBST2-VA-50	50	1875	40-52	85	124	M10x25
KBST2-VA-55	55	2500	45-58	93	140	M10x30
KBST2-VA-60	60	2750	50-64	100	150	M10x30
KBST2-VA-65	65	3335	60-72	115	200	M12x35
KBST2-VA-70	70	4000	65-78	122	220	M12x40
KBST2-VA-75	75	4585	70-88	133	220	M12x40
KBST2-VA-80	80	5660	75-92	138	220	M12x45
KBST2-VA-85	85	6250	75-92	148	250	M16x45
KBST2-VA-90	90	7000	80-100	157	280	M16x50
KBST2-VA-95	95	8335	80-100	167	300	M20x55
KBST2-VA-100	100	10400	80-104	173	320	M20x55

2 Piece Rigid Shaft Coupling Stainless

RIGID KBST2-G-VA



Standard Part Numbers

RIGID KBST2 - G - VA - 50

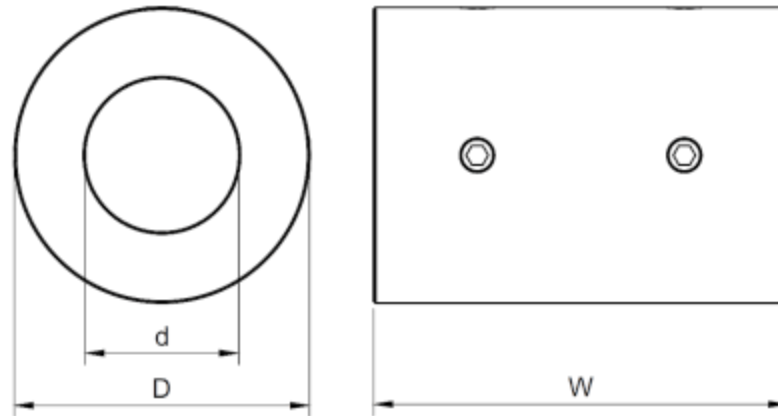
Different Bores Part Numbers

RIGID KBST2 - G - VA - 50 - 45 - 48

Size	Standard Bore d H7 (mm)	Max. Torque (Nm)	Dimensions			Clamping Bolt (ISO4762)
			d	D	W	
KBST2-G-VA-6	6	25	5-7	18	30	M3x8
KBST2-G-VA-8	8	40	5-12	24	35	M3x10
KBST2-G-VA-10	10	90	5-15	29	45	M4x12
KBST2-G-VA-12	12	90	5-15	29	45	M4x12
KBST2-G-VA-14	14	160	10-17	34	50	M5x16
KBST2-G-VA-15	15	160	10-17	34	50	M5x16
KBST2-G-VA-16	16	160	10-17	35	50	M5x16
KBST2-G-VA-20	20	300	10-24	42	65	M6x16
KBST2-G-VA-25	25	325	10-26	45	75	M6x16
KBST2-G-VA-30	30	400	20-32	53	83	M6x18
KBST2-G-VA-35	35	925	20-40	67	95	M8x25
KBST2-G-VA-40	40	1100	30-50	77	108	M8x25
KBST2-G-VA-50	50	1875	40-52	85	124	M10x25
KBST2-G-VA-55	55	2500	45-58	93	140	M10x30
KBST2-G-VA-60	60	2750	50-64	100	150	M10x30
KBST2-G-VA-65	65	3335	60-72	115	200	M12x35
KBST2-G-VA-70	70	4000	65-78	122	220	M12x40
KBST2-G-VA-75	75	4585	70-88	133	220	M12x40
KBST2-G-VA-80	80	5660	75-92	138	220	M12x45
KBST2-G-VA-85	85	6250	75-92	148	250	M16x45
KBST2-G-VA-90	90	7000	80-100	157	280	M16x50
KBST2-G-VA-95	95	8335	80-100	167	300	M20x55
KBST2-G-VA-100	100	10400	80-104	173	320	M20x55

1 Piece Rigid Shaft Coupling

RIGID KBST1



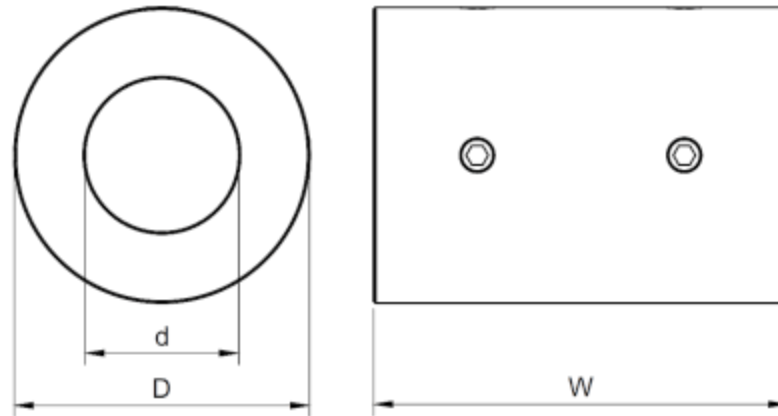
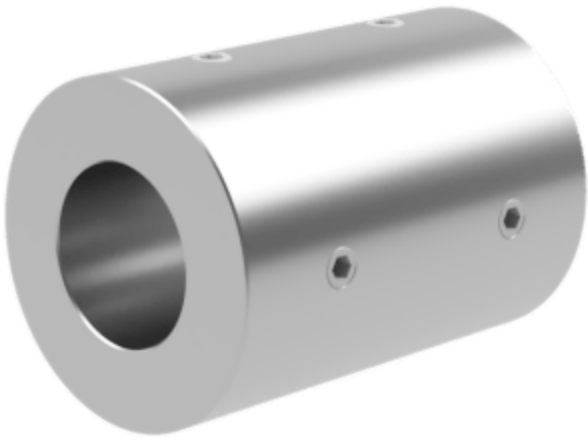
Standard Part Numbers

RIGID KBST1 - 50

Size	Standard Bore d H7 (mm)	Max. Torque (Nm)	Dimensions			Screw (ISO4762)
			d	D	W	
KBST1-6	6	4	6	18	30	M4x5
KBST1-8	8	8	8	24	35	M4x8
KBST1-10	10	12	10	29	45	M5x8
KBST1-12	12	17	12	29	45	M6x8
KBST1-14	14	30	14	34	50	M6x8
KBST1-15	15	32	15	34	50	M6x8
KBST1-16	16	35	16	35	50	M6x8
KBST1-20	20	70	20	42	65	M6x8
KBST1-25	25	135	25	45	75	M8x6
KBST1-30	30	155	30	53	83	M8x10
KBST1-35	35	230	35	67	95	M8x10
KBST1-40	40	310	40	77	108	M10x14
KBST1-50	50	490	50	85	124	M10x14

1 Piece Rigid Shaft Coupling Stainless

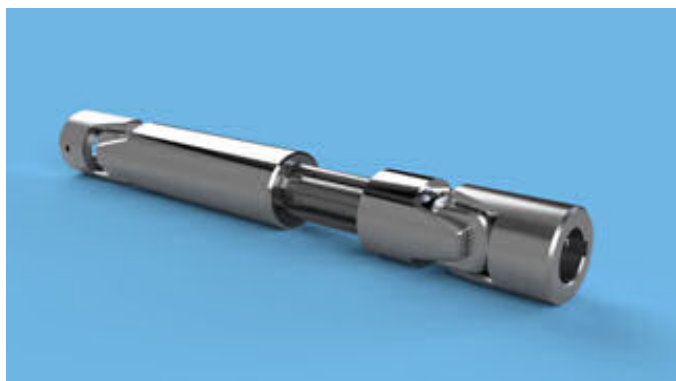
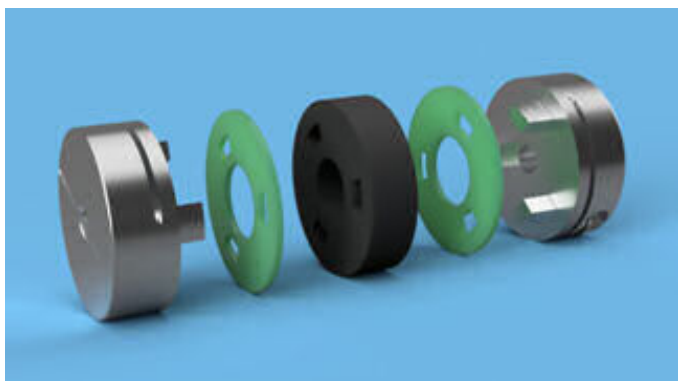
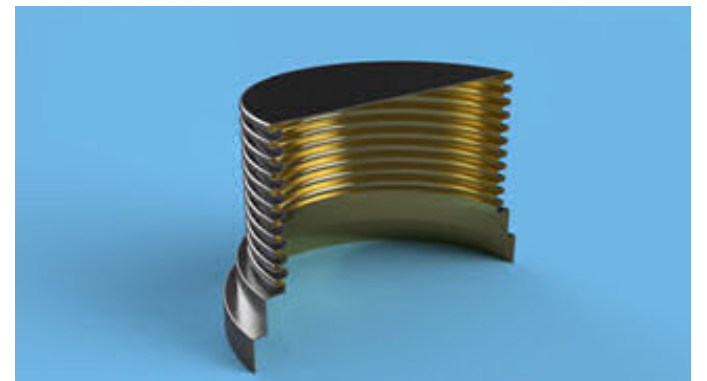
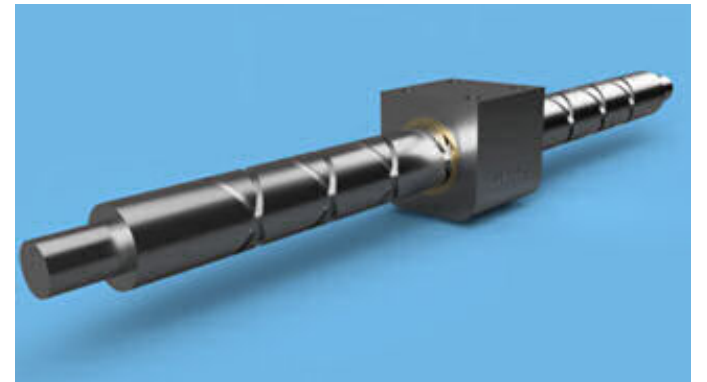
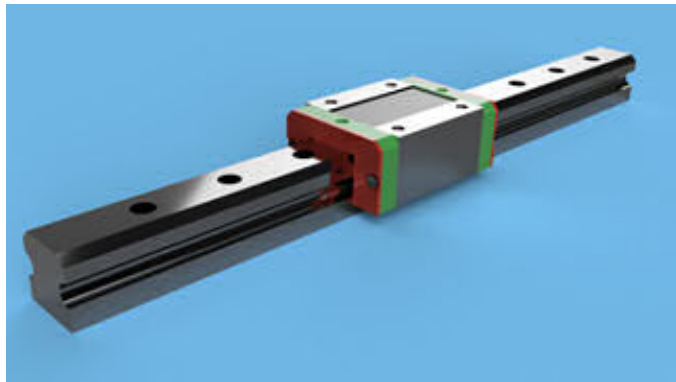
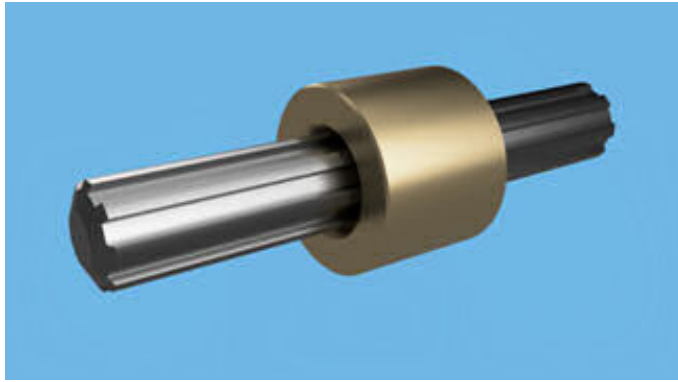
RIGID KBST1-VA



Standard Part Numbers

RIGID KBST1 - VA - 50

Size	Standard Bore d H7 (mm)	Max. Torque (Nm)	Dimensions			Screw (ISO4762)
			d	D	W	
KBST1-VA-6	6	2.7	6	18	30	M4x5
KBST1-VA-8	8	5.4	8	24	35	M4x8
KBST1-VA-10	10	8.1	10	29	45	M5x8
KBST1-VA-12	12	12	12	29	45	M6x8
KBST1-VA-14	14	20	14	34	50	M6x8
KBST1-VA-15	15	22	15	34	50	M6x8
KBST1-VA-16	16	24	16	35	50	M6x8
KBST1-VA-20	20	47	20	42	65	M6x8
KBST1-VA-25	25	91	25	45	75	M8x6
KBST1-VA-30	30	105	30	53	83	M8x10
KBST1-VA-35	35	155	35	67	95	M8x10
KBST1-VA-40	40	210	40	77	108	M10x14
KBST1-VA-50	50	340	50	85	124	M10x14



ABSSAC Ltd, E1A The Enterprise Centre, Enterprise Way,
Evesham, Worcestershire. United Kingdom. WR11 1GS

Call: 01386 421 005

Email: sales@abssac.co.uk

Visit: www.abssac.co.uk



twitter.com/ABSSAC



uk.pinterest.com/abssac



instagram.com/abssac