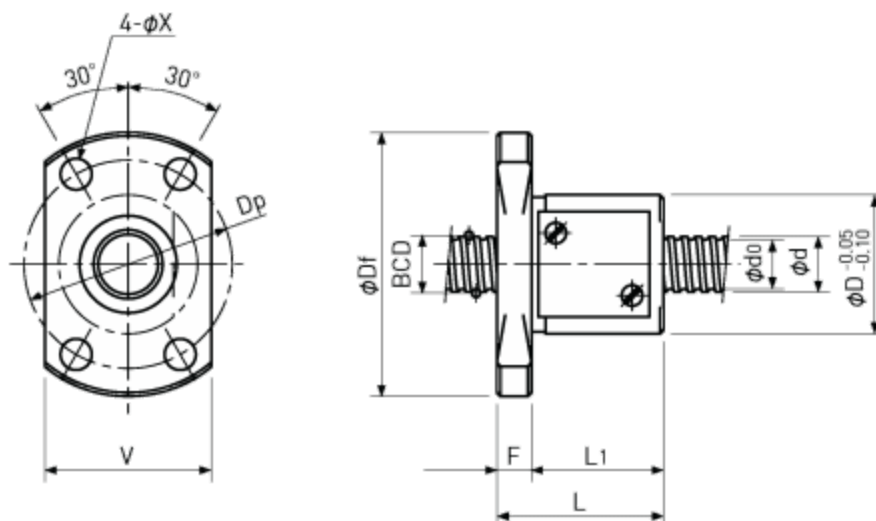


Rolled Ball Screws

Single Nut with Flange

Backlash type



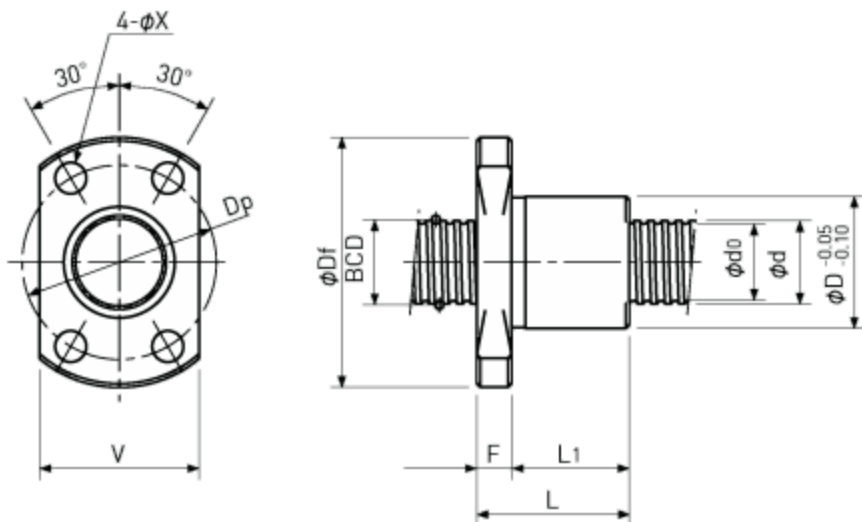
Type-1: Return-plate type

Ball Nut Model number	Shaft nominal dia. d	Lead	Ball size	BCD	Lead angle	Root dia. d0	Number of Circuit	Basic Load Rating N		Nut Rigidity N/μm
								Dynamic Ca	Static Coa	
MRB 0401	4	1	0.8	4.15	4°23'	3.3	3.7×1	560	790	54
MRB 0402	4	2	0.8	4.15	8°43'	3.3	2.7×1	420	570	39
MRB 0504	5	4	0.8	5.15	13°53'	4.3	2.7×1	470	720	47
MRB 0601 **	6	1	0.8	6.15	2°58'	5.3	3.7×1	680	1200	75
MRB 0602	6	2	1.0	6.20	5°52'	5.1	2.7×1	750	1200	58
MRB 0606	6	6	1.0	6.30	16°52'	5.2	1.6×2	870	1450	67
MRB 0610	6	10	1.2	6.30	26°48'	5.0	1.2×2	950	1600	50
MRB 0801 **	8	1	0.8	8.15	2°15'	7.3	3.7×1	780	1650	95
MRB 0802 **	8	2	1.5875	8.30	4°23'	6.6	3.7×1	2400	4100	111
MRB 0802.5	8	2.5	1.5875	8.00	5°41'	6.3	2.7×1	1850	3000	80
MRB 0805	8	5	1.5875	8.30	10°51'	6.6	2.7×1	1850	3000	82
MRB 0808	8	8	1.5875	8.40	16°52'	6.7	1.6×2	2200	3800	95
MRB 0810	8	10	1.5875	8.40	20°45'	6.7	1.6×2	2200	3800	92
MRB 0812	8	12	1.5875	8.40	24°27'	6.7	1.6×2	2200	4000	90
MRB 1002 **	10	2	1.5875	10.30	3°32'	8.6	3.7×1	2700	5300	134
MRB 1004	10	4	2.0	10.30	7°03'	8.2	2.7×1	3000	5200	104
MRB 1005	10	5	2.0	10.30	8°47'	8.2	2.7×1	3000	5200	103
MRB 1006	10	6	2.0	10.30	10°30'	8.2	2.7×1	3000	5000	102
MRB 1010	10	10	2.0	10.50	16°52'	8.4	1.6×2	3300	5900	117
MRB 1012	10	12	2.0	10.50	19°59'	8.4	1.6×2	3300	6200	115
MRB 1015	10	15	2.0	10.50	24°27'	8.4	1.6×2	3300	6400	110
MRB 1020	10	20	1.5875	10.40	31°28'	8.7	0.7×4	2100	4000	88

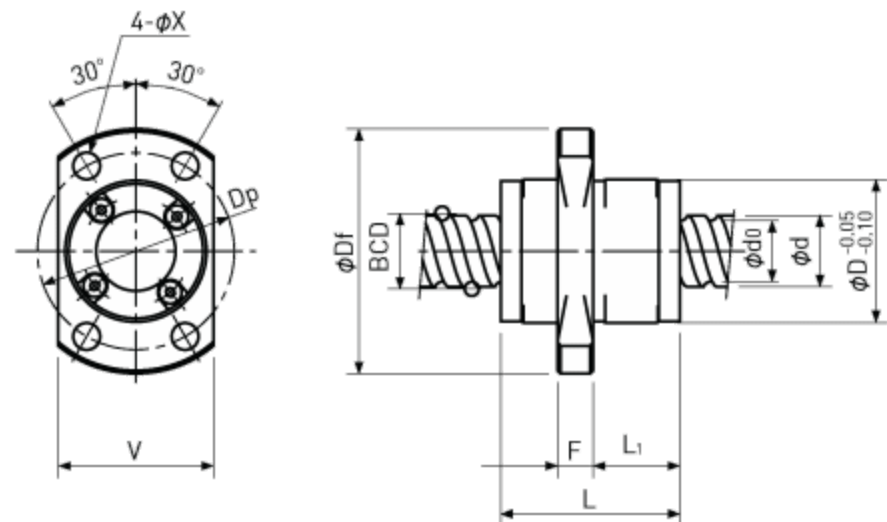
Rolled Ball Screws

Single Nut with Flange

Backlash type



Type-2: End-deflector type



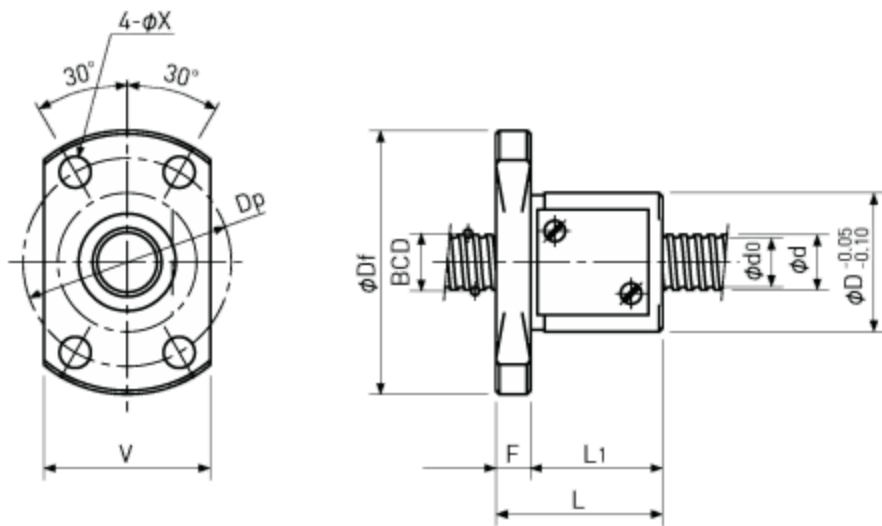
Type-3: End-cap type or End-deflector type

Ball Nut Model number	Nut dimension									
	Nut type	D	Df	L	L ₁	F	W	V	Dp	Bolt Hole X
MRB 0401	1	11	23	17	13	4	-	15	17	3.4
MRB 0402	1	11	23	19	15	4	-	15	17	3.4
MRB 0504	1	12	24	22	18	4	-	16	18	3.4
MRB 0601 **	1	13	26	17	13	4	-	16	20	3.4
MRB 0602	1	15	28	17	13	4	-	19	22	3.4
MRB 0606	3	14	27	17	8	4	-	16	21	3.4
MRB 0610	3	14	27	23	11.5	4	-	16	21	3.4
MRB 0801 **	1	16	29	17	13	4	-	18	23	3.4
MRB 0802 **	1	20	37	24	19	5	-	22	29	4.5
MRB 0802.5	2	16	29	16	12	4	-	18	23	3.4
MRB 0805	1	18	31	28	24	4	-	20	25	3.4
MRB 0808	3	18	31	20	10	4	-	20	25	3.4
MRB 0810	3	18	31	24	13	4	-	20	25	3.4
MRB 0812	3	18	31	27	17	4	-	20	25	3.4
MRB 1002 **	1	23	40	24	19	5	-	25	32	4.5
MRB 1004	1	24	41	28	23	5	-	26	33	4.5
MRB 1005	2	23	40	26	21	5	-	25	32	4.5
MRB 1006	1	26	42	33	28	5	-	28	34	4.5
MRB 1010	3	23	40	24	13	5	-	25	32	4.5
MRB 1012	3	23	40	28	17	5	-	25	32	4.5
MRB 1015	3	23	40	33	22	5	-	25	32	4.5
MRB 1020	3	20	37	23	13	5	-	22	29	4.5

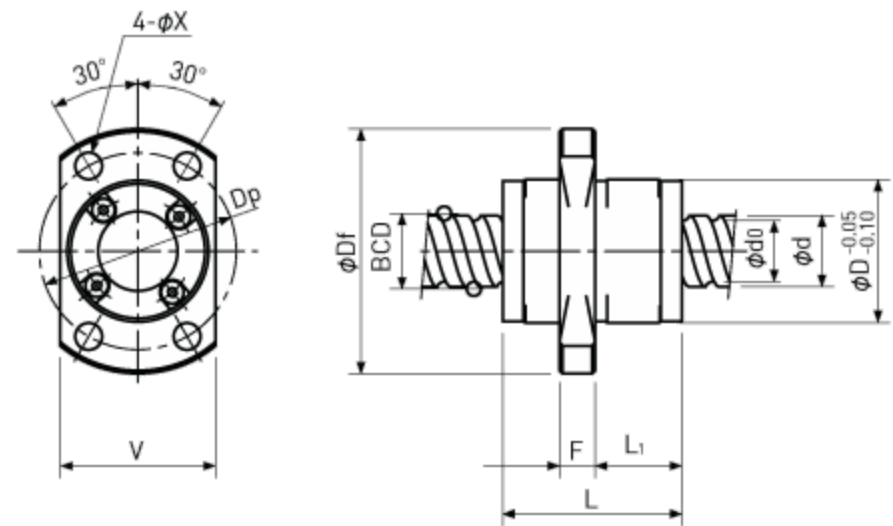
- Note 1) All models are Right-hand screw.
 Note 2) The diameter of the Screw Shaft both ends must be less than the Screw Shaft Root diameter, because of production and Nut assembly reason. If bigger end-journal than Shaft diameter is required, please consult ABSSAC.
 Note 3) Ball Nut dimension is without seal at the both ends. All type of Ball Nuts cannot equip with seals.
 Note 4) **Rigidity:** The Rigidity values shown in the table are theoretical values calculated from the amount of Elastic Displacement under the Axial load equivalent to 30% of the Basic Dynamic Load Rating Ca.
 For Axial load condition other than the above, see the formula in p-A823, you can calculate Rigidity using this formula.
 Note 5) **Stainless Rolled Ball Screw:** Stainless Rolled Ball Screw is available for Ball Nut Model Number marked **.

Single Nut with Flange

Backlash type



Type-1: Return-plate type

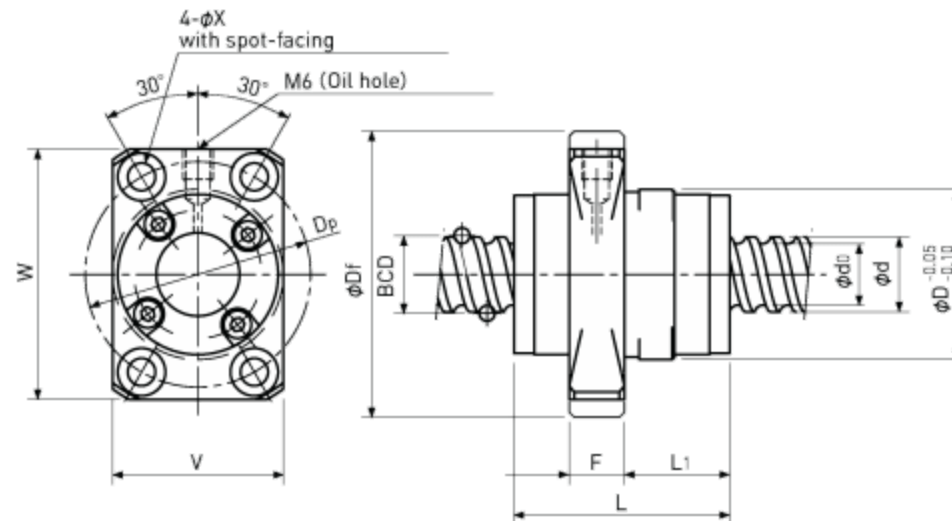


Type-3: End-cap type or End-deflector type

Ball Nut Model number	Shaft nominal dia. d	Lead	Ball size	BCD	Lead angle	Root dia. d0	Number of Circuit	Basic Load Rating N		Nut Rigidity N/μm
								Dynamic Ca	Static Coa	
MRB 1202	12	2	1.5875	12.30	2°58'	10.6	3.7×1	3000	6400	156
MRB 1210	12	10	2.381	12.65	14°07'	10.2	1.7×2	5100	9800	152
MRB 1312	13	12	2.381	13.50	15°48'	11.0	1.6×2	5000	9900	151
MRB 1315	13	15	2.381	13.50	19°29'	11.0	1.6×2	5000	10300	147
MRB 1320	13	20	2.381	13.50	25°15'	11.0	1.6×2	5000	10700	142
MRB 1402	14	2	1.5875	14.30	2°33'	12.6	3.7×1	3200	7500	176
MRB 1404	14	4	2.381	14.30	5°05'	11.8	3.7×1	5700	11600	187
MRB 1505(1)	15	5	3.175	15.50	5°41'	12.2	3.7×1	8900	17000	208
MRB 1505(2)	15	5	3.175	15.50	5°41'	12.2	3.7×1	8900	17000	208
MRB 1510(1)	15	10	3.175	15.50	11°36'	12.2	2.7×2	12000	25000	289
MRB 1510(2)	15	10	3.175	15.50	11°36'	12.2	2.7×2	12000	25000	289
MRB 1520(1)	15	20	3.175	15.75	22°01'	12.7	1.7×2	8000	16000	178
MRB 1520(2)	15	20	3.175	15.75	22°01'	12.7	1.7×2	8000	16000	178

Single Nut with Flange

Backlash type



Type-4: End-deflector type

Ball Nut Model number	Nut dimension									
	Nut type	D	Df	L	L ₁	F	W	V	Dp	Bolt Hole X
MRB 1202	1	25	42	24	19	5	—	27	34	4.5
MRB 1210	3	24	41	30	14.5	6	—	26	33	4.5
MRB 1312	3	28	45	30	17	5	—	30	37	4.5
MRB 1315	3	28	45	35	22	5	—	30	37	4.5
MRB 1320	3	28	45	43	29	5	—	30	37	4.5
MRB 1402	1	26	45	25	19	6	—	28	36	5.5
MRB 1404	1	30	49	33	27	6	—	32	40	5.5
MRB 1505(1)	4	32	55	33	16	11	49	33	43	5.5
MRB 1505(2)	4	34	57	33	16	11	50	34	45	5.5
MRB 1510(1)	4	32	55	43	21	11	49	33	43	5.5
MRB 1510(2)	4	34	57	43	21	11	50	34	45	5.5
MRB 1520(1)	4	32	55	52	28.5	11	49	33	43	5.5
MRB 1520(2)	4	34	57	52	28.5	11	50	34	45	5.5

Note 1)

All models are Right-hand screw.

Note 2)

The diameter of the Screw Shaft both ends must be less than the Screw Shaft Root diameter, because of production and Nut assembly reason. If bigger end-journal than Shaft diameter is required, please consult ABSSAC.

Note 3)

Ball Nut dimension is without seal at the both ends. All type of Ball Nuts cannot equip with seals.

Note 4)

Rigidity: The Rigidity values shown in the table are theoretical values calculated from the amount of Elastic Displacement under the Axial load equivalent to 30% of the Basic Dynamic Load Rating Ca.

For Axial load condition other than the above, see the formula in p-A823, you can calculate Rigidity using this formula.

Note 5)

Stainless Rolled Ball Screw: Stainless Rolled Ball Screw is available for Ball Nut Model Number marked **.