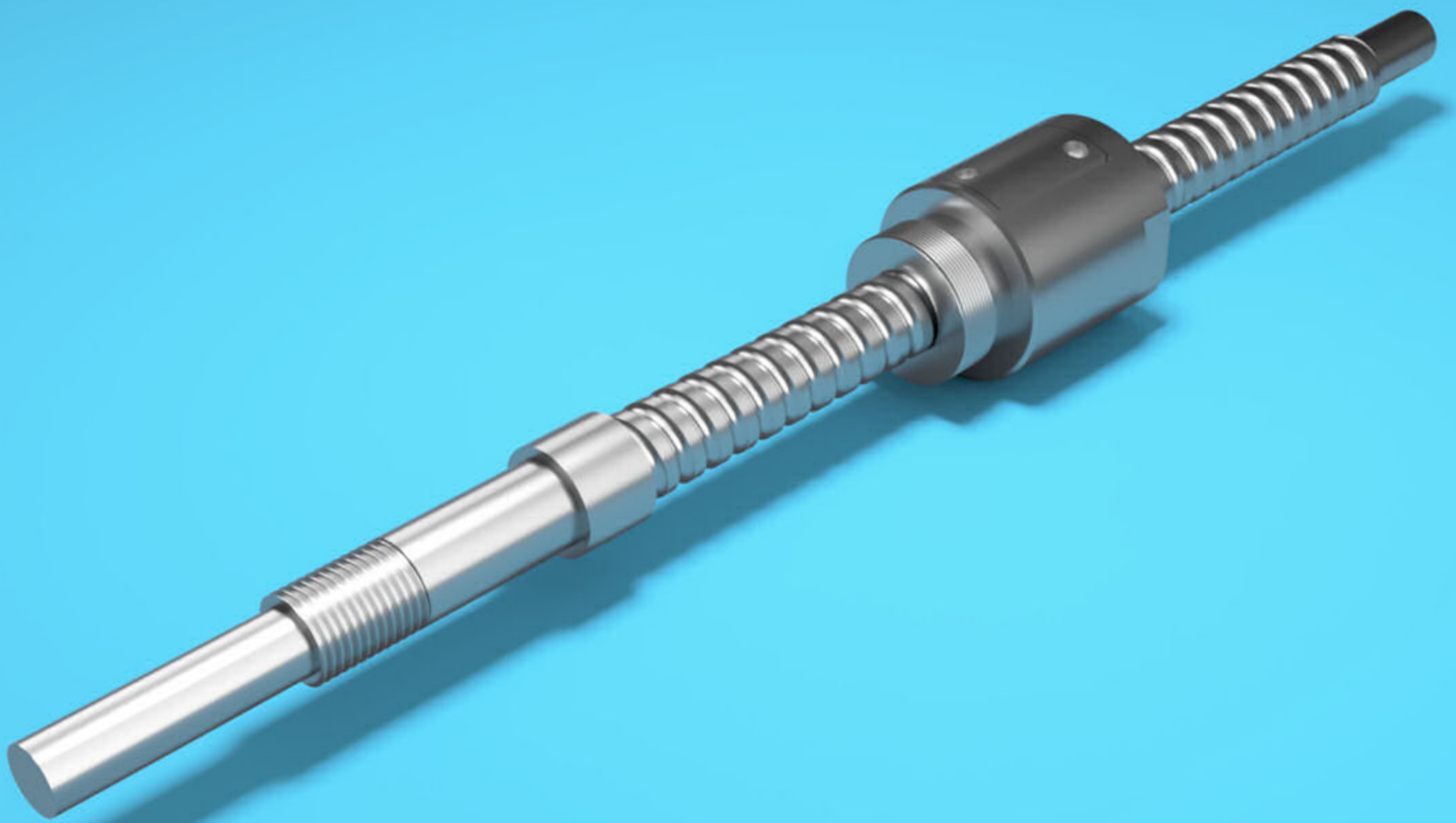


MS Thread Mounted Nut

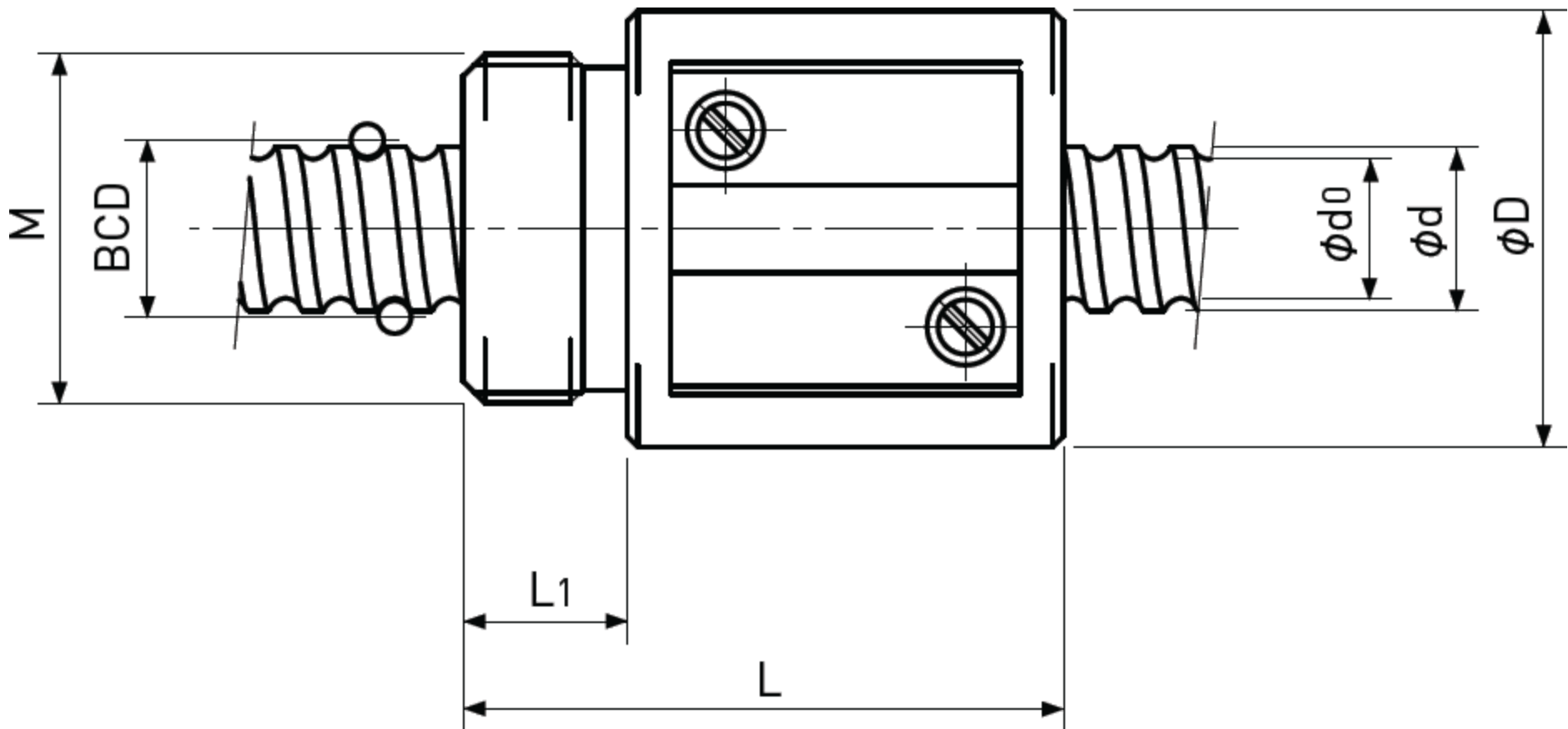


ABSSAC

PRECISION MOTION SINCE 1982

Precision Ball Screws

Single Nut with M-thread Backlash type/Preload type



Type-1: Return-plate type

Unit : mm

Ball Nut Model number	Shaft nominal dia. d	Lead	Ball size	BCD	Lead angle	Root dia. d_0	Number of Circuit	Basic Load Rating N		Nut Rigidity N/ μ m
								Dynamic Ca	Static Coa	
MS 0401 B	4	1	0.8	4.15	4°23'	3.3	3.7×1	560 / 350	790 / 400	54 / 45
MS 0602 A	6	2	1	6.2	5°52'	5.1	2.7×1	750 / 470	1200 / 590	58 / 49
MS 0801.5 B	8	1.5	1	8.2	3°20'	7.1	3.7×1	1100 / 700	2200 / 1100	99 / 83
MS 0802 B	8	2	1.5875	8.3	4°23'	6.6	3.7×1	2400 / 1550	4100 / 2100	111 / 94
MS 0802.5 T□i1□j	8	2.5	1.5875	8	5°41'	6.3	3.5×1	2300 / -	3900 / -	102 / -
MS 0802.5 T□i2□j	8	2.5	1.5875	8	5°41'	6.3	3.5×1	2300 / -	3900 / -	102 / -
MS 0803 A	8	3	2	8.3	6°34'	6.2	2.7×1	2600 / 1650	4200 / 2100	85 / 70
MS 0804 T	8	4	1.5875	8	9°03'	5.9	2.5×1	1750 / -	2800 / -	75 / -
MS 0805 A	8	5	1.5875	8.3	10°51'	6.6	2.7×1	1850 / 1150	3000 / 1500	82 / 67

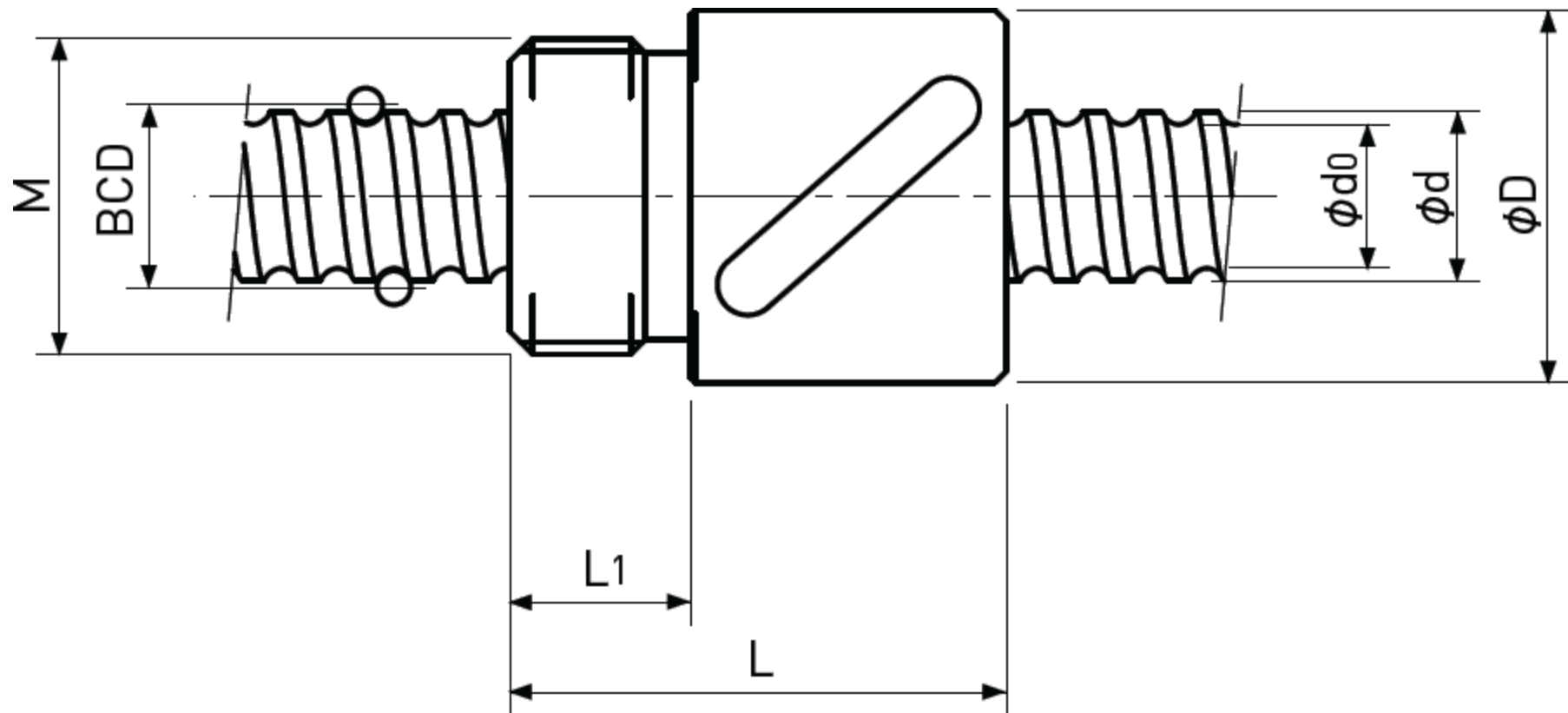
Ball Nut Model number	Nut dimension				
	Nut type	D	L	L ₁	M
MS 0401 B	1	11	17	4	M9×0.75
MS 0602 A	1	16.5	22	8	M14×1.0
MS 0801.5 B	1	16.5	24	8	M14×1.0
MS 0802 B	1	20	27.5	7.5	M16×1.0
MS 0802.5 T□i1□j	2	16.5	22	8	M14×1.0
MS 0802.5 T□i2□j	2	17.5	25.5	7.5	M15×1.0
MS 0803 A	1	20	28.5	7.5	M16×1.0
MS 0804 T	2	16.5	24	8	M14×1.0
MS 0805 A	1	18	32.5	7.5	M15×1.0

Basic Load Rating N		Nut Rigidity N/ μ m
Dynamic Ca	Static Coa	
1000 / 640	3300 / 1650	164 / 138
		Preload type
		Backlash type

- Note 1) The diameter of one of the Screw Shaft ends must be less than the Screw Shaft Root diameter, otherwise Ball Nut cannot be installed.
- Note 2) Ball Nut dimension is without seal at the both ends. All type of Ball Nuts cannot equip with seals.
- Note 3) The Rigidity values shown in the table are theoretical values of Ball Nut Rigidity calculated from the amount of Elastic Displacement under the following conditions.
Backlash type ; Apply the Axial load equivalent to 30% of the Basic Dynamic Load Rating Ca.
Preload type ; Apply the Preload equivalent to 5% of the Basic Dynamic Load Rating Ca.
- Note 4) All models are Right-hand Screw. If Left-hand Screw is required, please ask ABSSAC representative.
- Note 5) Across Flats or drill hole is available on the Ball Nut for the convenience of assembly. Please ask ABSSAC representative.
- Note 6) Basic Load Rating or Rigidity for Backlash type and Preload type are described in the same cell.

Precision Ball Screws

Single Nut with M-thread Backlash type/Preload type



Type-2: Return-tube type

Unit : mm

Ball Nut Model number	Shaft nominal dia. d	Lead	Ball size	BCD	Lead angle	Root dia. d ₀	Number of Circuit	Basic Load Rating N		Nut Rigidity N/μm
								Dynamic Ca	Static Coa	
MS 1002 B	10	2	1.5875	10.3	3°32'	8.6	3.7×1	2700 / 1750	5300 / 2700	134 / 112
MS 1202 B	12	2	1.5875	12.3	2°58'	10.6	3.7×1	3000 / 1900	6400 / 3200	156 / 132
MS 1204 T	12	4	2.381	12.3	5°55'	9.8	2.5×1	3900 / -	7000 / -	113 / -
MS 1402 B	14	2	1.5875	14.3	2°33'	12.6	3.7×1	3200 / 2000	7500 / 3800	176 / 148
MS 1404 B	14	4	2.381	14.3	5°05'	11.8	3.7×1	5700 / 3600	11600 / 5800	187 / 157

Ball Nut Model number	Nut dimension				
	Nut type	D	L	L ₁	M
MS 1002 B	1	23	27.5	7.5	M17×1.0
MS 1202 B	1	25	30	10	M20×1.0
MS 1204 T	2	25.5	34	10	M20×1.0
MS 1402 B	1	26	30	10	M22×1.5
MS 1404 B	1	30	38	10	M25×1.0

Basic Load Rating N		Nut Rigidity N/μm
Dynamic Ca	Static Coa	
1000 / 640	3300 / 1650	164 / 138
		Preload type
		Backlash type

- Note 1) The diameter of one of the Screw Shaft ends must be less than the Screw Shaft Root diameter, otherwise Ball Nut cannot be installed.
- Note 2) Ball Nut dimension is without seal at the both ends. All type of Ball Nuts cannot equip with seals.
- Note 3) The Rigidity values shown in the table are theoretical values of Ball Nut Rigidity calculated from the amount of Elastic Displacement under the following conditions.
Backlash type ; Apply the Axial load equivalent to 30% of the Basic Dynamic Load Rating Ca.
Preload type ; Apply the Preload equivalent to 5% of the Basic Dynamic Load Rating Ca.
- Note 4) All models are Right-hand Screw. If Left-hand Screw is required, please ask ABSSAC representative.
- Note 5) Across Flats or drill hole is available on the Ball Nut for the convenience of assembly. Please ask ABSSAC representative.
- Note 6) Basic Load Rating or Rigidity for Backlash type and Preload type are described in the same cell.