



MRH-BP2 series



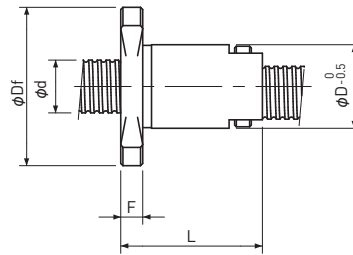
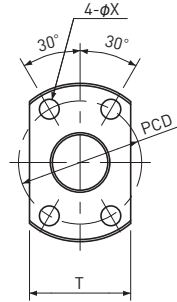
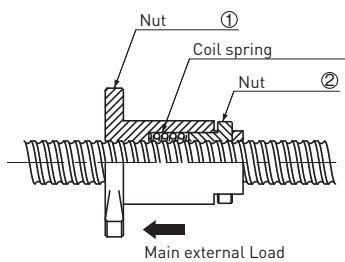
MRH-BP2 series (Customized Products)

• Dimension table

Model number notation

MRH 06 02 B P2 — 300 R 300
 ① ② ③ ④ ⑤ ⑥ ⑦ ⑧

- ① Nut model
- ② Screw Shaft nominal diameter (mm)
- ③ Lead (mm)
- ④ Flange configuration
B : 2 flat faces (4 holes)
- ⑤ Backlash free mark
P2 : Standard Preload
- ⑥ Screw thread length (mm)
- ⑦ Thread direction (Right-hand only)
- ⑧ Screw Shaft total length (mm)



Unit: mm

Model	Screw Shaft				Nut							Standard Shaft length
	Dia. d	Lead	Root dia.	No. of threads	D	L	Df	F	P.C.D	X	T	
MRH0602BP2	6	2	5.1	1	13	20	26	4	20	3.6	17	300
MRH0606BP2		6	5.2	2								
MRH0609BP2		9	5.3	4								
MRH0802BP2	8	2	6.6	1	15	23	28	4	22	3.6	19	400
MRH0805BP2		5	6.6	2								
MRH0808BP2		8	6.7	2								
MRH0812BP2	12	6.7	4									
MRH1002BP2	10	2	8.6	1	18	30	31	5	25	3.6	20	500
MRH1006BP2		6	8.4	2								
MRH1010BP2		10	8.4	2								
MRH1015BP2		15	8.4	4								
MRH1020BP2	20	8.7	4									
MRH1202BP2	12	2	10.6	1	23	38	41	5	33	4.8	25	600
MRH1206BP2		6	10.4	2								
MRH1210BP2		10	10.4	2								
MRH1220BP2		20	10.4	6								
MRH1230BP2		30	10.4	8								

Note 1) Additional machining of Screw Shafts should be performed by KSS. Note that accuracy cannot be guaranteed if additional machining is performed by someone other than KSS.

Note 2) The Shaft end diameter should be smaller than the Screw Shaft Root diameter, and the Screw thread length should be specified in 1mm units.

Note 3) Only Right-hand thread is available.

Note 4) Screw Shafts and Nuts are not sold separately.

Note 5) Please inquire regarding spring tension (lower or higher than standard is available).

Note 6) It is recommended that the main external load is in the direction as indicated by the arrow in the Figure above.