



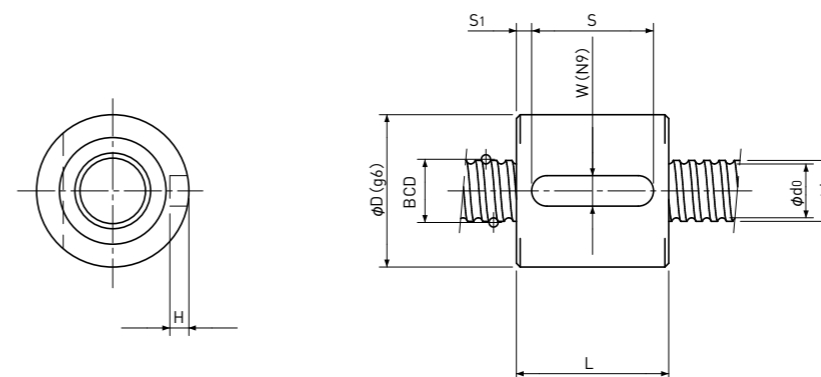
Sleeve type single nut



Rolled Ball Screws

Sleeve type Single Nut

Backlash type



Unit: mm

Ball Nut Model number	Shaft nominal dia. d	Lead	Ball size	BCD	Lead angle	Root dia. d ₀	Number of Circuit	Basic Load Rating		Nut Rigidity N/μm	Nut dimension						Ball Nut Model number
								N			D	L	W	H	S	S ₁	
								Dynamic Ca	Static Coa								
BSR 0401	4	1	0.8	4.15	4° 23'	3.3	3.7x1	560	790	54	11	14	3	1.8	8	3	BSR 0401
BSR 0402	4	2	0.8	4.15	8° 43'	3.3	2.7x1	420	570	39	11	16	3	1.8	8	4	BSR 0402
BSR 0504	5	4	0.8	5.15	13° 53'	4.3	2.7x1	470	720	47	12	22	3	1.8	12	5	BSR 0504
BSR 0601 **	6	1	0.8	6.15	2° 58'	5.3	3.7x1	680	1200	75	13	14	3	1.8	10	2	BSR 0601 **
BSR 0602	6	2	1.0	6.20	5° 52'	5.1	2.7x1	750	1200	58	15	15	3	1.8	10	2.5	BSR 0602
BSR 0801 **	8	1	0.8	8.15	2° 15'	7.3	3.7x1	780	1650	95	16	14	3	1.8	10	2	BSR 0801 **
BSR 0802 **	8	2	1.5875	8.30	4° 23'	6.6	3.7x1	2400	4100	111	20	20	4	2.5	16	2	BSR 0802 **
BSR 0802.5	8	2.5	1.5875	8.00	5° 41'	6.3	2.7x1	1850	3000	80	16	16	3	1.8	8	4	BSR 0802.5
BSR 0805	8	5	1.5875	8.30	10° 51'	6.6	2.7x1	1850	3000	82	18	28	4	2.5	20	4	BSR 0805

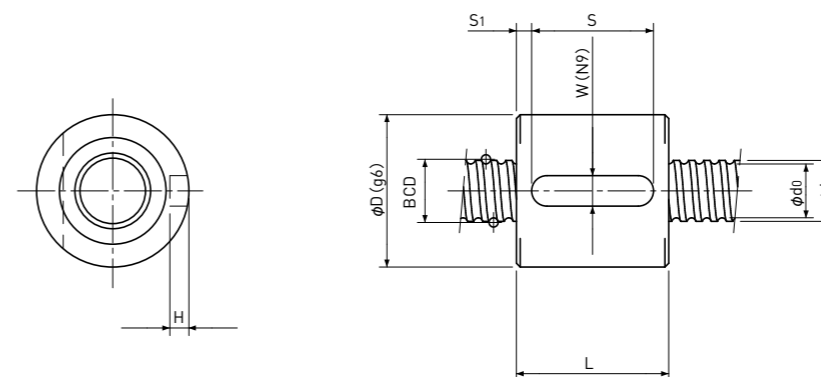
- Note 1) All models are Right-hand screw.
- Note 2) The diameter of the Screw Shaft both ends must be less than the Screw Shaft Root diameter, because of production and Nut assembly reason. If bigger end-journal than Shaft diameter is required, please consult KSS.
- Note 3) Ball Nut dimension is without seal at the both ends. All type of Ball Nuts cannot equip with seals.
- Note 4) Rigidity
The Rigidity values shown in the table are theoretical values calculated from the amount of Elastic Displacement under the Axial load equivalent to 30% of the Basic Dynamic Load Rating Ca.
For Axial load condition other than the above, see the formula in p-A823, you can calculate Rigidity using this formula.
- Note 5) Stainless Rolled Ball Screw
Stainless Rolled Ball Screw is available for Ball Nut Model Number marked **.



Rolled Ball Screws

Sleeve type Single Nut

Backlash type



Unit: mm

Ball Nut Model number	Shaft nominal dia. d	Lead	Ball size	BCD	Lead angle	Root dia. d ₀	Number of Circuit	Basic Load Rating		Nut Rigidity N/μm	Nut dimension						Ball Nut Model number
								N			D	L	W	H	S	S ₁	
								Dynamic Ca	Static Coa								
BSR 1002 **	10	2	1.5875	10.30	3° 32'	8.6	3.7x1	2700	5300	134	23	20	5	3	16	2.5	BSR 1002 **
BSR 1004	10	4	2.0	10.30	7° 03'	8.2	2.7x1	3000	5200	104	24	26	5	3	20	3	BSR 1004
BSR 1005	10	5	2.0	10.30	8° 47'	8.2	2.7x1	3000	5200	103	23	26	5	3	16	5	BSR 1005
BSR 1006	10	6	2.0	10.30	10° 30'	8.2	2.7x1	3000	5000	102	26	31	5	3	20	5.5	BSR 1006
BSR 1202	12	2	1.5875	12.30	2° 58'	10.6	3.7x1	3000	6400	156	25	20	5	3	16	2	BSR1202
BSR 1402	14	2	1.5875	14.30	2° 33'	12.6	3.7x1	3200	7500	176	26	20	5	3	16	2	BSR 1402
BSR 1404	14	4	2.381	14.30	5° 05'	11.8	3.7x1	5700	11600	187	30	31	5	3	25	3	BSR 1404

- Note 1) All models are Right-hand screw.
- Note 2) The diameter of the Screw Shaft both ends must be less than the Screw Shaft Root diameter, because of production and Nut assembly reason. If bigger end-journal than Shaft diameter is required, please consult KSS.
- Note 3) Ball Nut dimension is without seal at the both ends. All type of Ball Nuts cannot equip with seals.
- Note 4) Rigidity
The Rigidity values shown in the table are theoretical values calculated from the amount of Elastic Displacement under the Axial load equivalent to 30% of the Basic Dynamic Load Rating Ca.
For Axial load condition other than the above, see the formula in p-A823, you can calculate Rigidity using this formula.
- Note 5) Stainless Rolled Ball Screw
Stainless Rolled Ball Screw is available for Ball Nut Model Number marked **.